

2015 APNA

Arkansas Prevention Needs Assessment Student Survey

Lafayette County
Profile Report

**Arkansas Department of Human Services
Division of Behavioral Health Services
Prevention Services**

Conducted by International Survey Associates dba Pride Surveys

Contents

1 INTRODUCTION	6
1.1 The Risk and Protective Factor Model of Prevention	9
2 TOOLS FOR ASSESSMENT AND PLANNING	9
3 SCHOOL IMPROVEMENT USING SURVEY DATA	10
3.1 What are the numbers telling you?	10
3.2 How to decide if a rate is "unacceptable."	10
3.3 Use these data for planning:	10
4 HOW TO READ THE CHARTS AND TABLES	12
5 AGE OF FIRST USE	49
6 STUDENT TOBACCO USE, EXPERIENCES AND PREVENTION SERVICES	54
7 DRUG-FREE COMMUNITIES SUPPORT PROGRAM CORE MEASURES	58
8 PREVENTION RESOURCES	60
8.1 Regional Prevention Providers (RPP)	60
8.2 State and National Contacts	62

List of Tables

1 Student Totals	7
2 Grade	7
3 Sex	8
4 Ethnic Origin	8
5 Risk and Protective Factor Scale Definition	31
6 Alcohol - Lifetime Use	33
7 Cigarettes - Lifetime Use	33
8 Chewing Tobacco - Lifetime Use	33
9 Marijuana - Lifetime Use	33
10 Hallucinogens - Lifetime Use	34
11 Cocaine - Lifetime Use	34
12 Inhalants - Lifetime Use	34
13 Synthetic Marijuana - Lifetime Use	34
14 Meth - Lifetime Use	35
15 Bath Salts - Lifetime Use	35
16 Heroin - Lifetime Use	35
17 Ecstasy - Lifetime Use	35
18 Prescription Drugs - Lifetime Use	36
19 Over-The-Counter Drugs - Lifetime Use	36
20 Alcopops - Lifetime Use	36
21 Any Drug - Lifetime Use	36
22 Alcohol - Past 30 Day Use	36
23 Cigarettes - Past 30 Day Use	37
24 Chewing Tobacco - Past 30 Day Use	37
25 Marijuana - Past 30 Day Use	37
26 Hallucinogens - Past 30 Day Use	37
27 Cocaine - Past 30 Day Use	38
28 Inhalants - Past 30 Day Use	38
29 Synthetic Marijuana - Past 30 Day Use	38
30 Meth - Past 30 Day Use	38
31 Bath Salts - Past 30 Day Use	38
32 Heroin - Past 30 Day Use	39
33 Ecstasy - Past 30 Day Use	39
34 Prescription Drugs - Past 30 Day Use	39
35 Over-The-Counter Drugs - Past 30 Day Use	39
36 Alcopops - Past 30 Day Use	39
37 Any Drug - Past 30 Day Use	40
38 Binge Drinking	40
39 Pack of Cigarettes	40
40 Suspended from School	40
41 Drunk or High at School	40
42 Sold Illegal Drugs	40
43 Stolen a Vehicle	41

44	Been Arrested	41
45	Attacked to Harm	41
46	Carried a Handgun	41
47	Handgun to School	41
48	Community Risk - High Community Disorganization	41
49	Community Risk - Transitions and Mobility	42
50	Community Risk - Laws and Norms Favorable to Drug Use	42
51	Community Risk - Perceived Availability of Drugs	42
52	Community Risk - Perceived Availability of Handguns	42
53	Family Risk - Poor Family Management	42
54	Family Risk - Family History of Antisocial Behavior	42
55	Family Risk - Parental Attitudes Favorable to ATOD	43
56	Family Risk - Parental Attitudes Favorable to ASB	43
57	School Risk - Academic Failure	43
58	School Risk - Low Commitment to School	43
59	Peer Risk - Early Initiation of Drug Use	43
60	Peer Risk - Early Initiation of ASB	43
61	Peer Risk - Peer Favorable Attitudes to ASB	44
62	Peer Risk - Peer Favorable Attitudes to Drug Use	44
63	Peer Risk - Low Perceived Risk of Drug Use	44
64	Peer Risk - Interaction with Antisocial Peers	44
65	Peer Risk - Friends' Use of Drugs	44
66	Peer Risk - Peer Rewards for Antisocial Involvement	44
67	Peer Risk - Depressive Symptoms	45
68	Peer Risk - Gang Involvement	45
69	School Protective - School Opportunities for PSI	45
70	School Protective - School Rewards for PSI	45
71	Peer Protective - Religiosity	45
72	Sources of Alcohol	46
73	Location of Alcohol Use	46
74	I feel safe at my school.	47
75	How often have you taken a handgun to school.	47
76	How wrong do you think it is for someone your age to take a gun to school.	48
77	Have any of your brothers/sisters ever taken a gun to school.	48
78	Avg Age of First Marijuana	49
79	Avg Age of First Cigarettes	49
80	Avg Age of First Alcohol	49
81	Avg Age of First Regular Alcohol Use	49
82	Avg Age of First E-Cigarettes, E-Cigars or E-Hookahs	49
83	Avg Age of First Prescription Drugs	50
84	Avg Age of First School Suspension	50
85	Avg Age of First Been Arrested	50
86	Avg Age of First Carried a Gun	50
87	Avg Age of First Belonged to a Gang	50

88	Cigarettes - Lifetime Use	54
89	Chewing Tobacco - Lifetime Use	54
90	Cigarettes - Past 30 Day Use	54
91	Chewing Tobacco - Past 30 Day Use	54
92	Which statement best describes rules about smoking inside your home or your family cars?	55
93	Have you ever used e-cigarettes, e-cigars, or e-hookahs?	55
94	How frequently have you used e-cigarettes, e-cigars, or e-hookahs?	56
95	During this school year, were you taught in any of your classes about the dangers of tobacco use?	56
96	During the past 12 months, have you participated in any community activities to discourage people your age from using cigarettes, chewing tobacco, snuff, dip or cigars, e-cigarettes, e-cigars, or e-hookahs?	57
97	Core Measure by Grade for Past 30 Day Use	58
98	Core Measure by Grade for Perception of Risk	58
99	Core Measure by Grade for Parental Disapproval	58
100	Core Measure by Grade for Friends Disapproval	58
101	Core Measure by Sex for Past 30 Day Use	59
102	Core Measure by Sex for Perception of Risk	59
103	Core Measure by Sex for Parental Disapproval	59
104	Core Measure by Sex for Friends Disapproval	59

List of Figures

1	Alcohol, Tobacco and Other Drug Use - Grade 8	13
2	Alcohol, Tobacco and Other Drug Use - Grade 10	14
3	Alcohol, Tobacco and Other Drug Use - Grade 12	15
4	Heavy Use and Antisocial Behavior - Grade 8	16
5	Heavy Use and Antisocial Behavior - Grade 10	17
6	Heavy Use and Antisocial Behavior - Grade 12	18
7	Risk Factors - Grade 8	19
8	Risk Factors - Grade 10	20
9	Risk Factors - Grade 12	21
10	Protective Factors - Grade 8	22
11	Protective Factors - Grade 10	23
12	Protective Factors - Grade 12	24
13	School Safety Profile - Grade 8	25
14	School Safety Profile - Grade 10	26
15	School Safety Profile - Grade 12	27
16	Sources and Locations of Alcohol Use - Grade 8	28
17	Sources and Locations of Alcohol Use - Grade 10	29
18	Sources and Locations of Alcohol Use - Grade 12	30
19	Avg. Age of First Use - Grade 8	51
20	Avg. Age of First Use - Grade 10	52
21	Avg. Age of First Use - Grade 12	53

1 INTRODUCTION

This report summarizes findings from the Arkansas Prevention Needs Assessment Survey (APNA), a survey of 6th, 8th, 10th and 12th grade school students, conducted in the fall of 2015. This survey was available free of charge to all Arkansas public school districts that chose to participate. The survey was designed to assess adolescent substance use and related behaviors, and risk and protective factors that predict these behaviors. In this report, the results are presented for each grade along with the overall results for the State. Table 1 provides information on the total number of students and the number of students in the county. Table 2 provides information on the number and percent of students at each grade. Table 3 provides information on the number and percent of students by sex. Table 4 provides information on the number and percent of students by ethnic origin.

The APNA Survey was first administered in the fall of 2002 and has been administered in the fall of each school year since then. Because trends over time are very important to prevention planning, readers are encouraged to review the results from the previous surveys. By comparing the results of the previous surveys, changes in ATOD (alcohol, tobacco and other drugs) use, rates of ASB (antisocial behavior), and levels of risk and protective factors can be determined for a specific grade. It is important to note that the results in this report are for students who were not sampled in the even grades (6, 8, 10, and 12) during the previous year's survey. Those students are now in grades 7, 9, 11 or are out of school. Together, the results of the current and past APNA surveys provide a complete picture of ATOD use, antisocial behavior, risk, and protection for students in Arkansas.

Table 1: Student Totals

Response	Group	2012-13	2013-14	2014-15	2015-16
Total Students	county	257	0	141	59
	state	86,424	87,246	84,018	82,832

Table 2: Grade

Response	Group	2012-13		2013-14		2014-15		2015-16	
		pct	n	pct	n	pct	n	pct	n
6	county	24.1	62	0.0	0	32.6	46	0.0	0
	state	28.2	24,392	27.4	23,878	28.3	23,745	27.6	22,836
8	county	30.7	79	0.0	0	27.0	38	44.1	26
	state	27.7	23,920	29.4	25,646	28.4	23,866	28.8	23,884
10	county	24.9	64	0.0	0	27.0	38	35.6	21
	state	24.9	21,537	24.5	21,356	24.6	20,634	25.1	20,773
12	county	20.2	52	0.0	0	13.5	19	20.3	12
	state	19.2	16,575	18.8	16,366	18.8	15,773	18.5	15,339

Table 3: Sex

Response	Group	2012-13		2013-14		2014-15		2015-16	
		pct	n	pct	n	pct	n	pct	n
Male	county	51.3	99	0.0	0	37.9	36	49.2	29
	state	47.9	29,570	48.3	30,446	48.6	29,084	48.3	28,777
Female	county	48.7	94	0.0	0	62.1	59	50.8	30
	state	52.1	32,166	51.7	32,649	51.4	30,792	51.7	30,764

Table 4: Ethnic Origin

Response	Group	2012-13		2013-14		2014-15		2015-16	
		pct	n	pct	n	pct	n	pct	n
Hispanic	county	3.7	8	0.0	0	3.9	4	0.0	0
	state	9.9	7,141	10.7	7,941	10.2	7,372	11.7	8,459
Black or African American	county	47.0	102	0.0	0	58.3	60	31.2	20
	state	17.1	12,352	16.1	11,937	15.7	11,326	14.8	10,729
Asian	county	0.5	1	0.0	0	0.0	0	1.6	1
	state	1.9	1,355	1.9	1,436	2.0	1,430	2.1	1,522
American Indian	county	4.6	10	0.0	0	2.9	3	4.7	3
	state	4.3	3,127	4.4	3,231	4.2	3,027	4.1	2,945
Alaska Native	county	0.0	0	0.0	0	0.0	0	0.0	0
	state	0.2	178	0.2	118	0.2	159	0.1	104
White	county	39.6	86	0.0	0	30.1	31	60.9	39
	state	58.8	42,335	58.9	43,673	58.2	41,976	56.8	41,233
Native Hawaiian	county	0.0	0	0.0	0	1.0	1	0.0	0
	state	0.8	593	0.8	599	0.9	643	1.0	693
Other	county	4.6	10	0.0	0	3.9	4	1.6	1
	state	6.9	4,954	7.1	5,275	8.6	6,189	9.5	6,868

1.1 The Risk and Protective Factor Model of Prevention

Risk and protective factor-focused prevention is based on a simple premise: To prevent a problem from happening, we need to identify the factors that increase the risk of that problem developing and then find ways to reduce the risks. Just as medical researchers have found risk factors for heart attacks such as diets high in fats, lack of exercise, and smoking, a team of researchers, the Social Development Research Group (SDRG), at the University of Washington, have defined a set of risk factors for drug abuse. The research team also found that some children exposed to multiple risk factors manage to avoid behavior problems later even though they were exposed to the same risks as children who exhibited behavior problems. Based on research, they identified protective factors and processes that work together to buffer children from the effects of high risk exposure and lead to the development of healthy behaviors.

Risk factors include characteristics of school, community, and family environments, as well as characteristics of students and their peer groups that are known to predict increased likelihood of drug use, delinquency, and violent behaviors among youth (Hawkins, Catalano & Miller, 1992; Hawkins, Arthur & Catalano, 1995; Brewer, Hawkins, Catalano & Neckerman, 1995).

2 TOOLS FOR ASSESSMENT AND PLANNING

Protective factors exert a positive influence or buffer against the negative influence of risk, thus reducing the likelihood that adolescents will engage in problem behaviors. Protective factors, identified through research reviewed by the Social Development Research Group, include social bonding to family, school, community and peers; and healthy beliefs and clear standards for behavior.

Research on risk and protective factors has important implications for prevention efforts. The premise of this approach is that in order to promote positive youth development and prevent problem behaviors, it is necessary to address those factors that predict the problem. By measuring risk and protective factors in a population, specific risk factors that are elevated and widespread can be identified and targeted by preventive interventions that also promote related protective factors. For example, if academic failure is identified as an elevated risk factor in a community, then mentoring and tutoring interventions can be provided that will improve academic performance, and also increase opportunities and rewards for classroom participation.

Risk and protective factor-focused drug abuse prevention is based on the work of J. David Hawkins, Ph.D., Richard F. Catalano, Ph.D.; and a team of researchers at

the University of Washington in Seattle. Beginning in the early 1980's, the group researched adolescent problem behaviors and identified risk factors for adolescent drug abuse and delinquency. The chart below shows the links between the 16 risk factors and the five problem behaviors. The check marks have been placed in the chart to indicate where at least two well designed, published research studies have shown a link between the risk factor and the problem behavior.

YOUTH AT RISK	PROBLEM BEHAVIORS				
	Substance Abuse	Delinquency	Teen Pregnancy	School Drop-Out	Violence
Community					
Availability of Drugs and Firearms	✓				✓
Community Laws and Norms Favorable Toward Drug Use	✓				
Transitions and Mobility	✓	✓		✓	
Low Neighborhood Attachment and Community Disorganization	✓	✓			✓
Extreme Economic and Social Deprivation	✓	✓	✓	✓	✓
Family					
Family History of High Risk Behavior	✓	✓	✓	✓	
Family Management Problems	✓	✓	✓	✓	✓
Family Conflict	✓	✓	✓	✓	✓
Favorable Parental Attitudes and Involvement in the Problem Behavior	✓	✓			✓
School					
Early and Persistent Antisocial Behavior	✓	✓	✓	✓	✓
Academic Failure in Elementary School	✓	✓	✓	✓	✓
Lack of Commitment to School	✓	✓	✓	✓	
Individual/Peer					
Alienation and Rebelliousness	✓	✓		✓	
Friends Who Engage in a Problem Behavior	✓	✓	✓	✓	✓
Favorable Attitudes Toward the Problem Behavior	✓	✓	✓	✓	
Early Initiation of the Problem Behavior	✓	✓	✓	✓	✓

3 SCHOOL IMPROVEMENT USING SURVEY DATA

Data from the Arkansas Prevention Needs Assessment Survey can be used to help school and community planners assess current conditions and prioritize areas of greatest need.

Each risk and protective factor can be linked to specific types of interventions that have been shown to be effective in either reducing the risk(s) and enhancing the protection(s). The steps outlined below will help your school and community make key decisions regarding allocation of resources, how and when to address specific needs, and which strategies are most effective and known to produce results.

3.1 What are the numbers telling you?

Review the charts and data tables presented in this report. Using the table in section 3.3, note your findings as you discuss the following questions

- Which 3 to 5 risk factors appear to be higher than you would want?
- Which 3 to 5 protective factors appear to be lower than you would want?
- Which levels of 30 day drug use are increasing and/or unacceptably high?
 - Which substances are your students using the most?
 - At which grades do you see unacceptable usage levels?
- Which levels of antisocial behaviors are increasing and/or unacceptably high?
 - Which behaviors are your students exhibiting the most?
 - At which grades do you see unacceptable behavior levels?

3.2 How to decide if a rate is "unacceptable."

- Look across the charts to determine which items stand out as either much higher or much lower than the others.
- Compare your data to statewide data and national data. Differences of 5% or more between the local and other data should be carefully reviewed.
- Determine the standards and values held in your area. For example: Is it acceptable in your community for 75% of high school students to drink alcohol regularly even when the statewide percentage is 90?

3.3 Use these data for planning:

- Substance use and antisocial behavior data - raise awareness about the problems and promote dialogue.
- Risk and protective factor data - identify exactly where the community needs to take action.
- Promising approaches - talk with resources listed on the last page of this report for ideas about programs that have been proven effective in addressing the risk factors that are high in your area, and in improving the protective factors that are low.

Measure	Unacceptable Rate #1	Unacceptable Rate #2	Unacceptable Rate #3	Unacceptable Rate #4
30 Day Drug Use				
Antisocial Behavior				
Risk Factors				
Protective Factors				

How do I decide which intervention(s) to employ?

- Strategies should be selected based on the risk factors that are high in your community and the protective factors that are low.
- Strategies should be age appropriate and employed prior to the onset of the problem behavior.
- Strategies chosen should address more than a single risk and protective factor.
- No single strategy offers the solution.

How do I know whether or not the intervention was effective?

- Participation in the annual administration of the survey provides trend data necessary for determining the effectiveness of the implemented intervention(s) and also provides data for determining any new efforts that are needed.

4 HOW TO READ THE CHARTS AND TABLES

1. Student responses for risk and protective factors, substance use and antisocial behavior questions are displayed by grade on the following pages.
2. The factors are grouped into 4 domains: community, family, school, and peer-individual.
3. The bars represent the percent of students in the grade who reported elevated risk or protection, substance use, antisocial behaviors or school safety concerns.
4. Scanning across these charts, you can easily determine which factors are most (or least) prevalent, thus identifying which are the most important for your community to address.
5. Bars will be complemented by a small dash. The dash shows the comparison from the state and provides additional information for you in determining the relative importance of each risk or protective factor.
6. A dashed line on each risk and protective factor chart represents the percentage of youth at risk or with protection for the seven state sample upon which the cut-points were developed. The seven states included in the norm group were Colorado, Illinois, Kansas, Maine, Oregon, Utah and Washington. This gives you a comparison to a national sample.
7. Brief definitions of the risk and protective factors can be found following the graphs.
8. The tables provide more detailed information and are broken down by grade level. The combined category consists of all the grade levels represented in this report combined together (ie. if the report is based on 10th and 12th graders then the combined category will be all the 10th and 12th graders combined). For the tables on substance use, some substances also have a comparison to the Monitoring the Future (MTF) data. Monitoring the Future is an annual federally funded national survey of substance use across the country for students in grade 8, 10 and 12. For some substances and for some years or some grades, there is no corresponding MTF data.
9. The following abbreviations are sometimes used in the tables and charts due to space constraints:

ATOD stands for Alcohol, Tobacco and Other Drug Use.

ASB stands for Antisocial Behaviors.

PSI stands for Prosocial Involvement.

MTF stands for Monitoring the Future.

Alcohol, Tobacco and Other Drug Use - Grade 8

Lafayette County

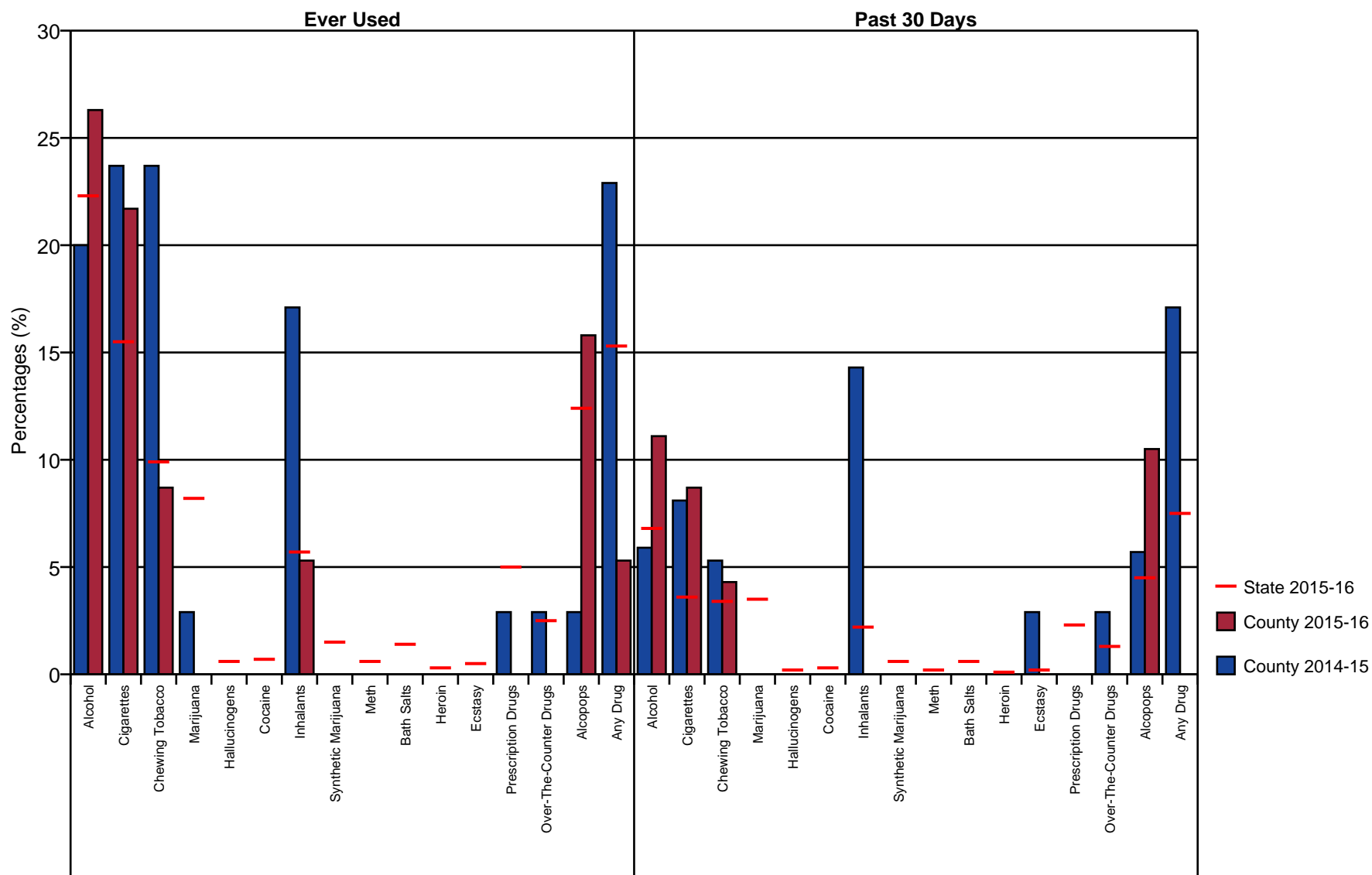


Figure 1: Alcohol, Tobacco and Other Drug Use - Grade 8

Alcohol, Tobacco and Other Drug Use - Grade 10

Lafayette County

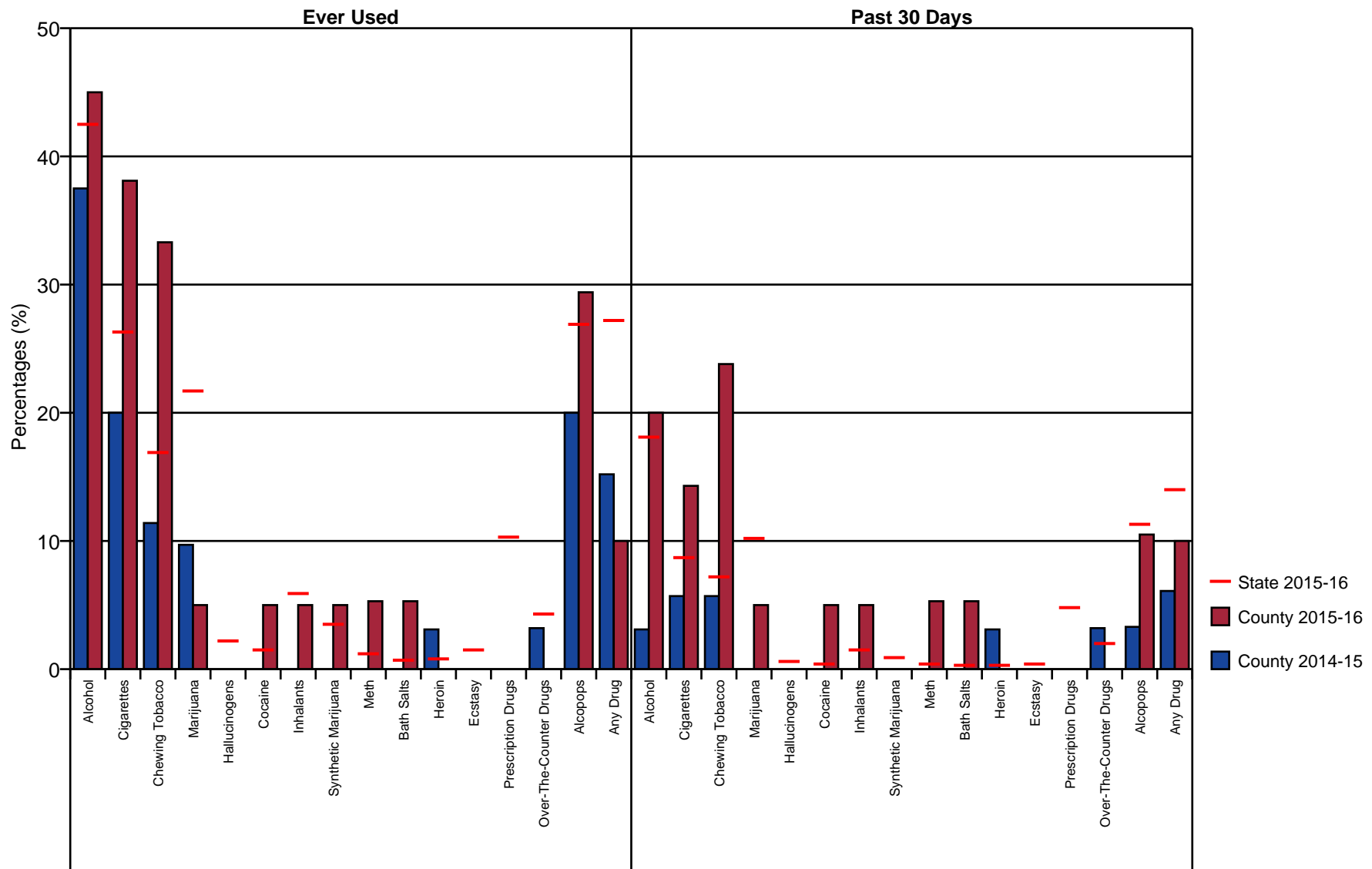


Figure 2: Alcohol, Tobacco and Other Drug Use - Grade 10

Alcohol, Tobacco and Other Drug Use - Grade 12

Lafayette County

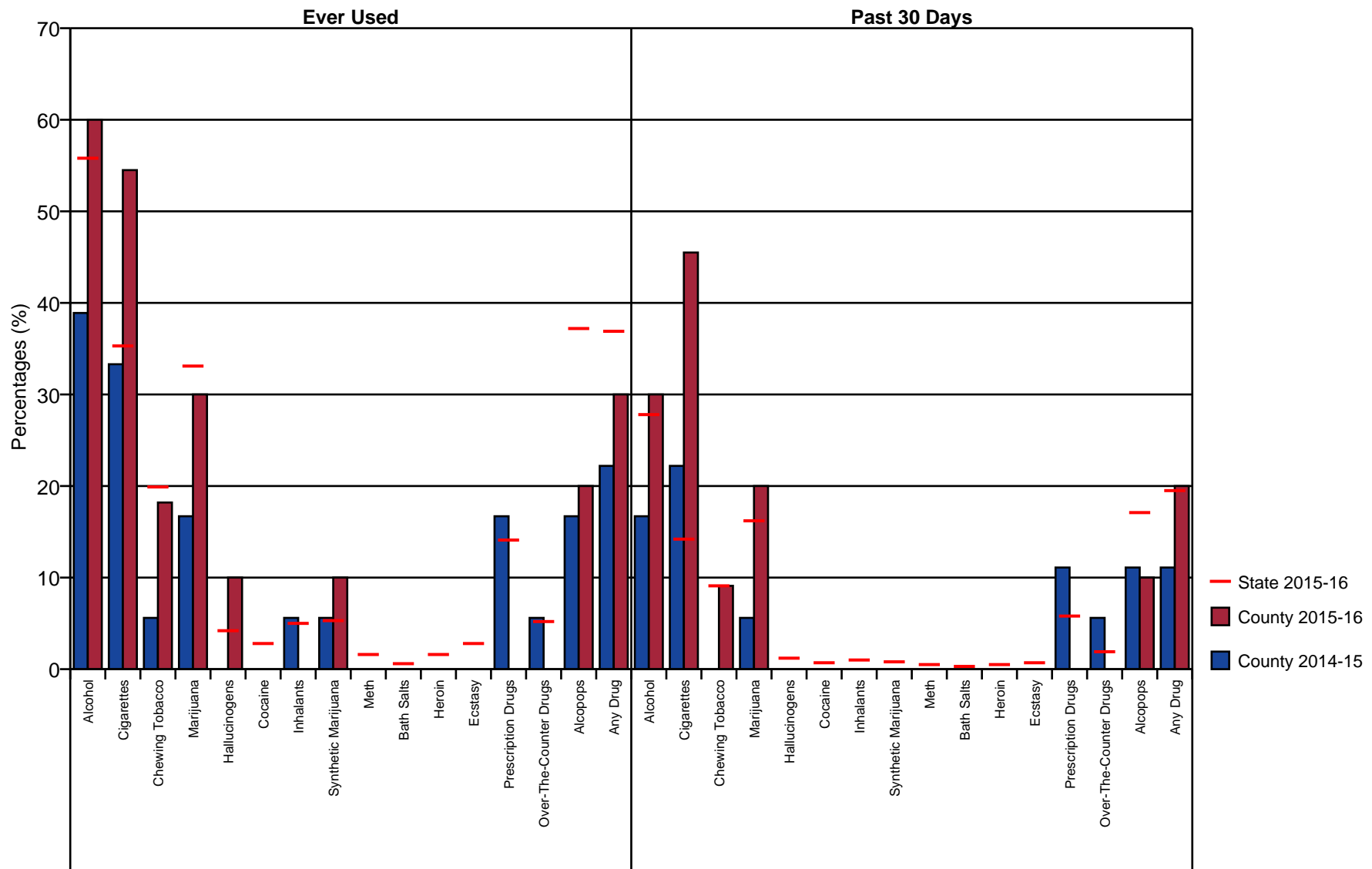


Figure 3: Alcohol, Tobacco and Other Drug Use - Grade 12

Heavy Use and Antisocial Behavior - Grade 8

Lafayette County

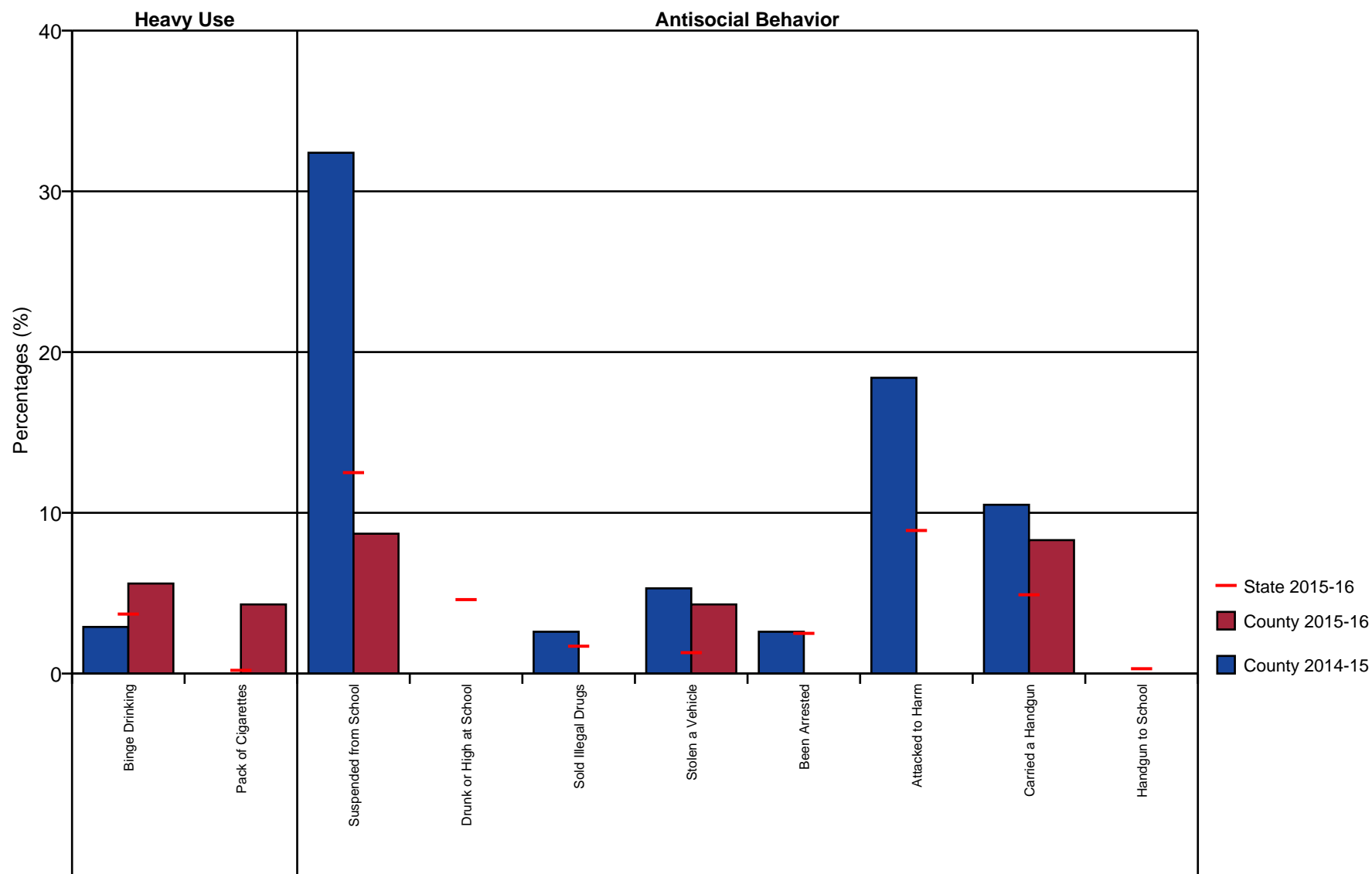


Figure 4: Heavy Use and Antisocial Behavior - Grade 8

Heavy Use and Antisocial Behavior - Grade 10

Lafayette County

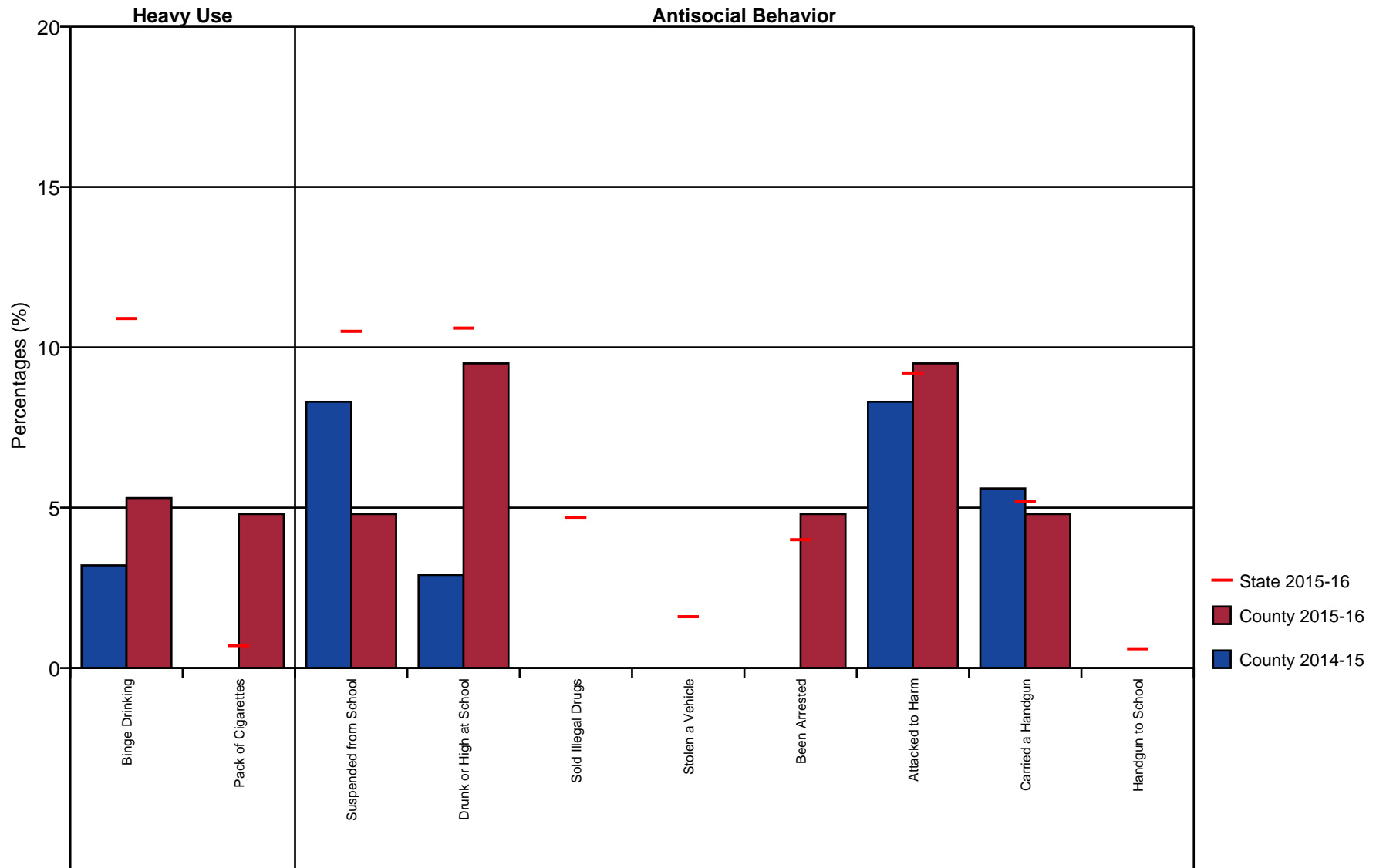


Figure 5: Heavy Use and Antisocial Behavior - Grade 10

Heavy Use and Antisocial Behavior - Grade 12

Lafayette County

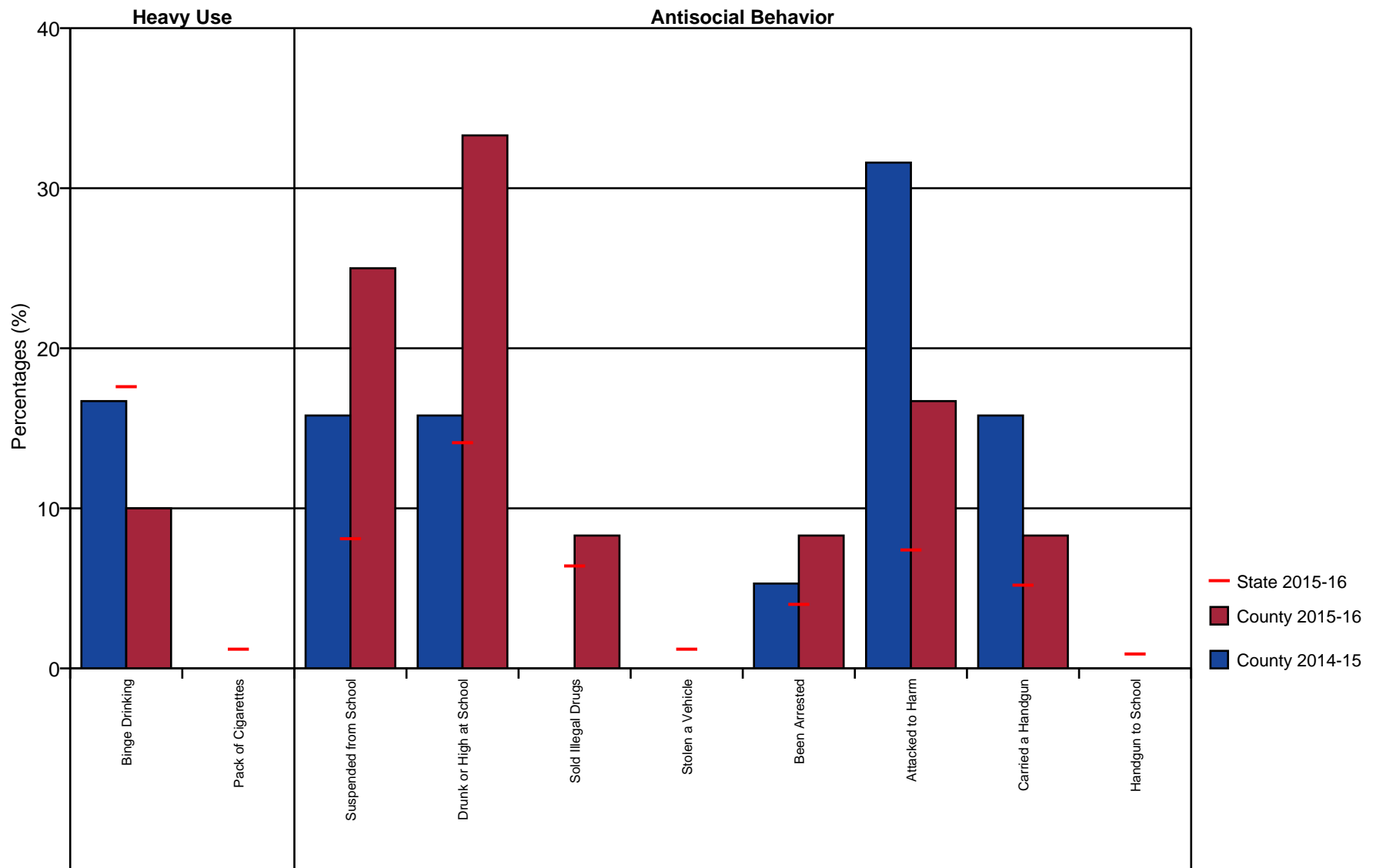


Figure 6: Heavy Use and Antisocial Behavior - Grade 12

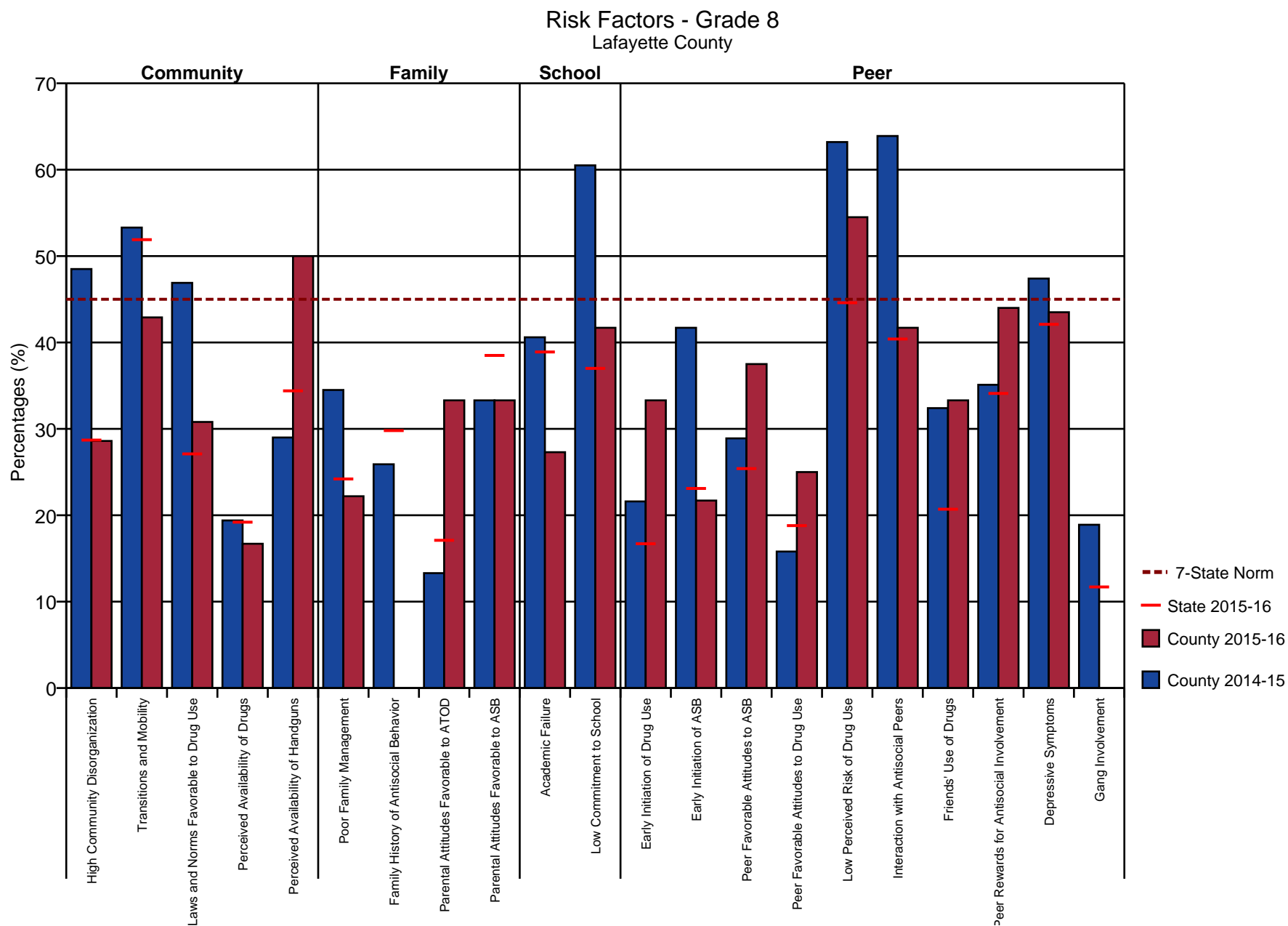


Figure 7: Risk Factors - Grade 8

Risk Factors - Grade 10 Lafayette County

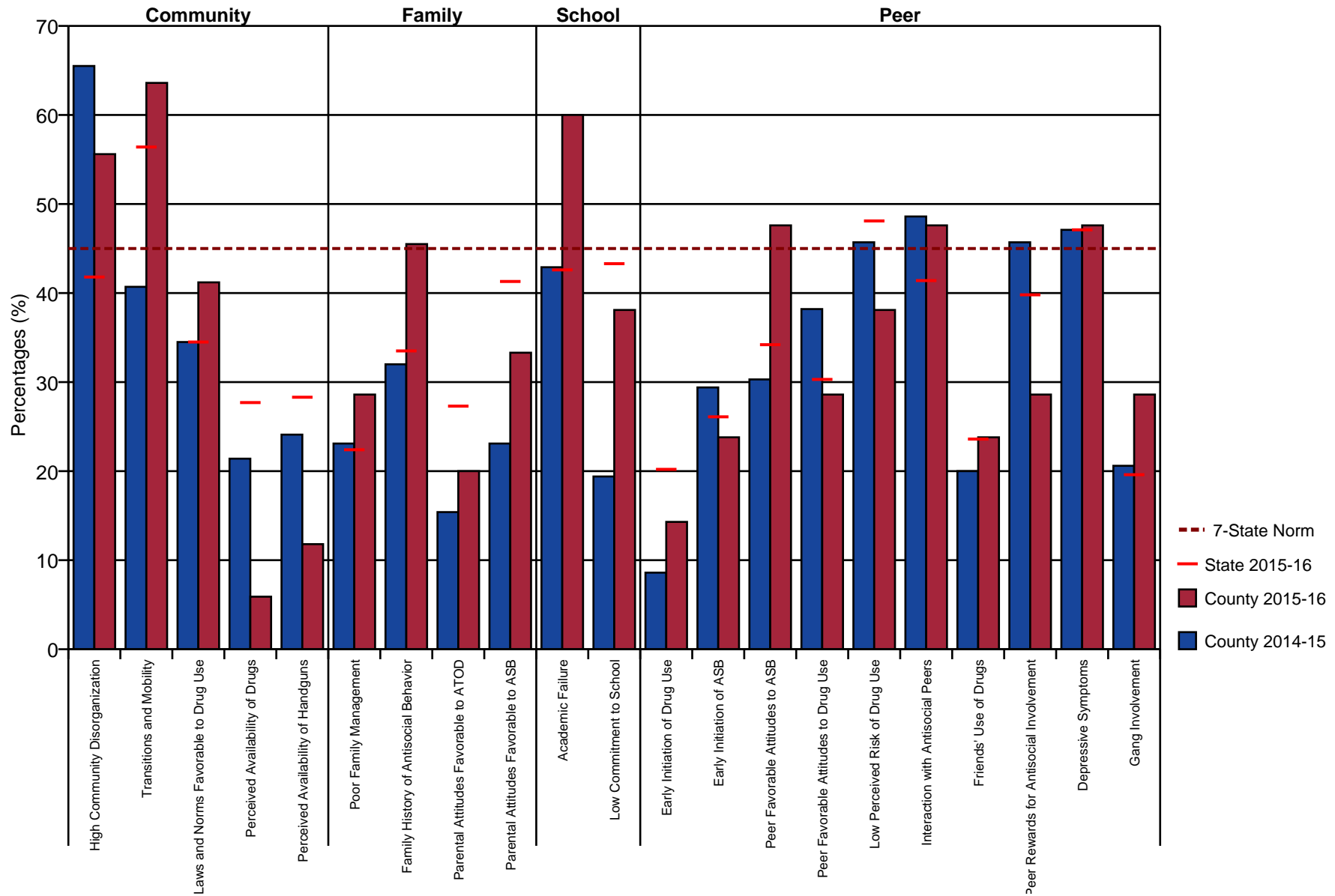


Figure 8: Risk Factors - Grade 10

Risk Factors - Grade 12 Lafayette County

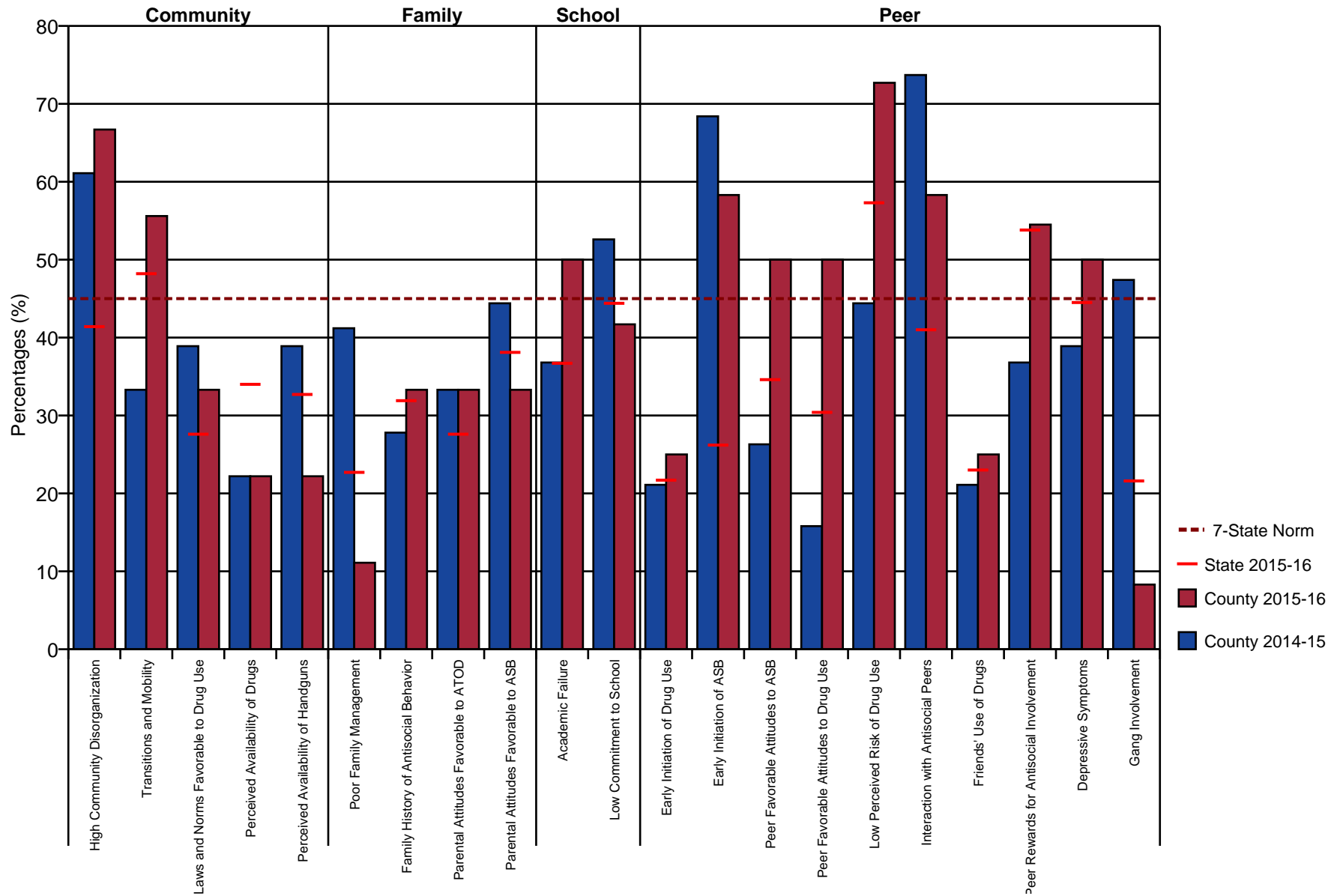


Figure 9: Risk Factors - Grade 12

Protective Factors - Grade 8

Lafayette County

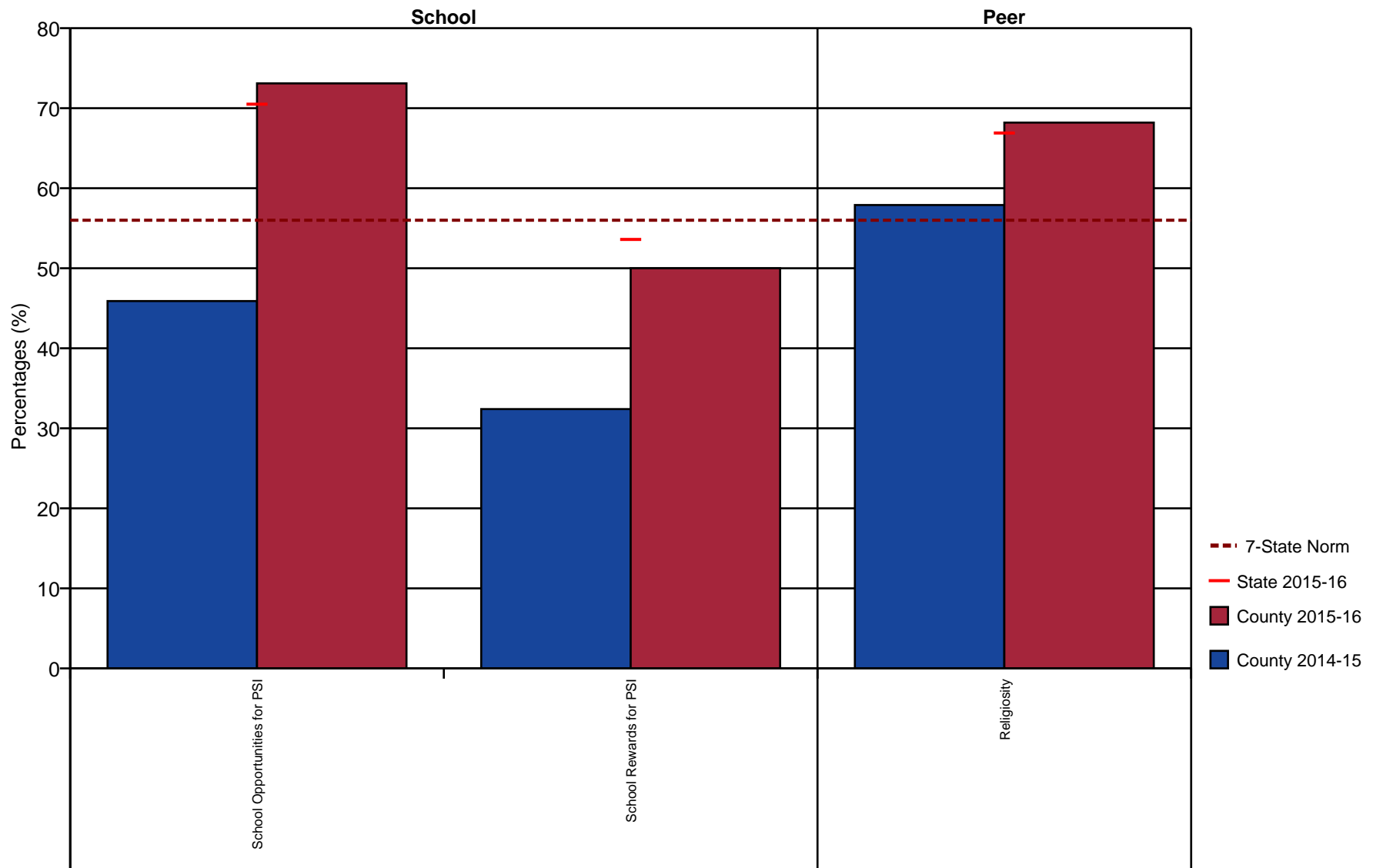


Figure 10: Protective Factors - Grade 8

Protective Factors - Grade 10 Lafayette County

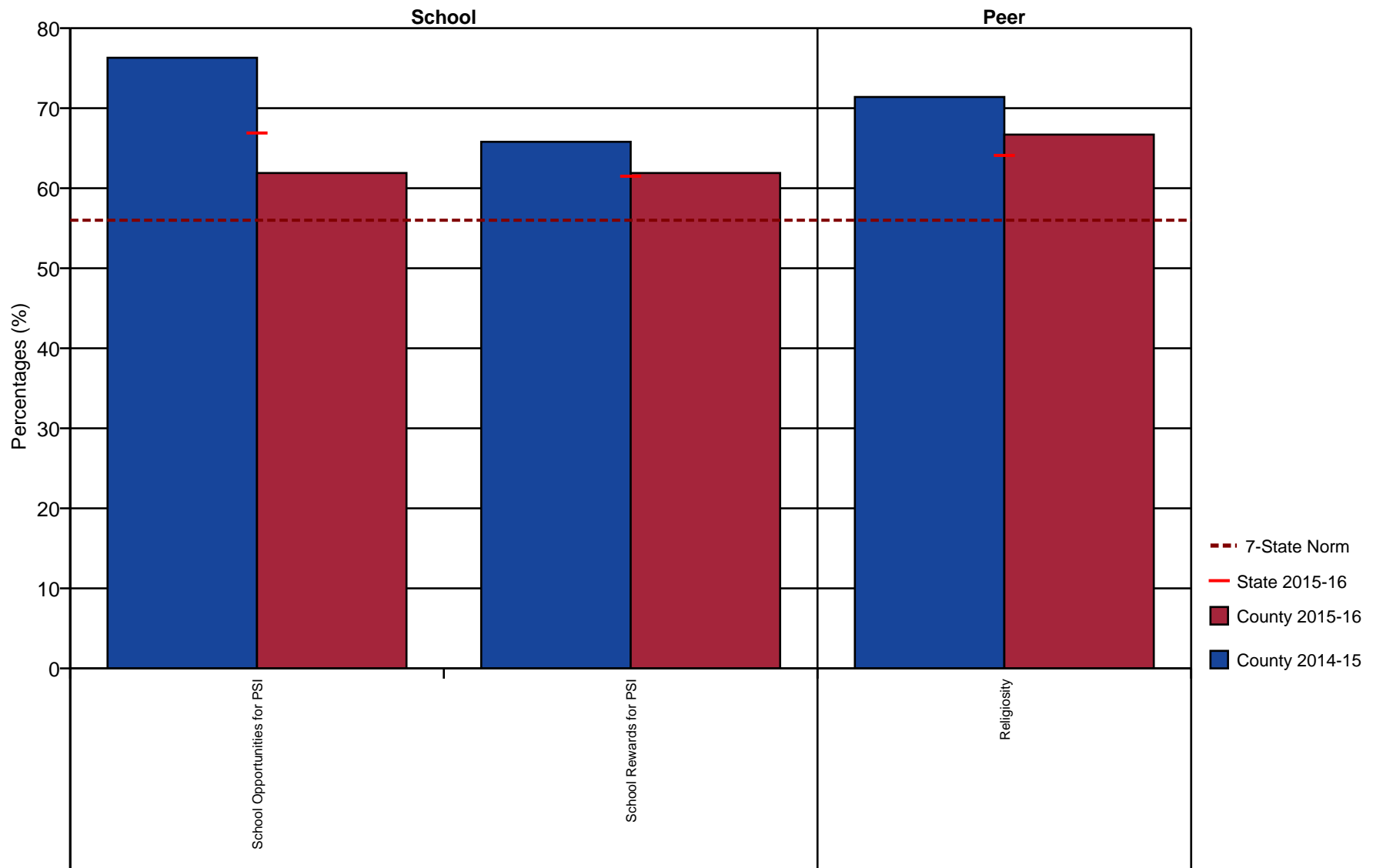


Figure 11: Protective Factors - Grade 10

Protective Factors - Grade 12 Lafayette County

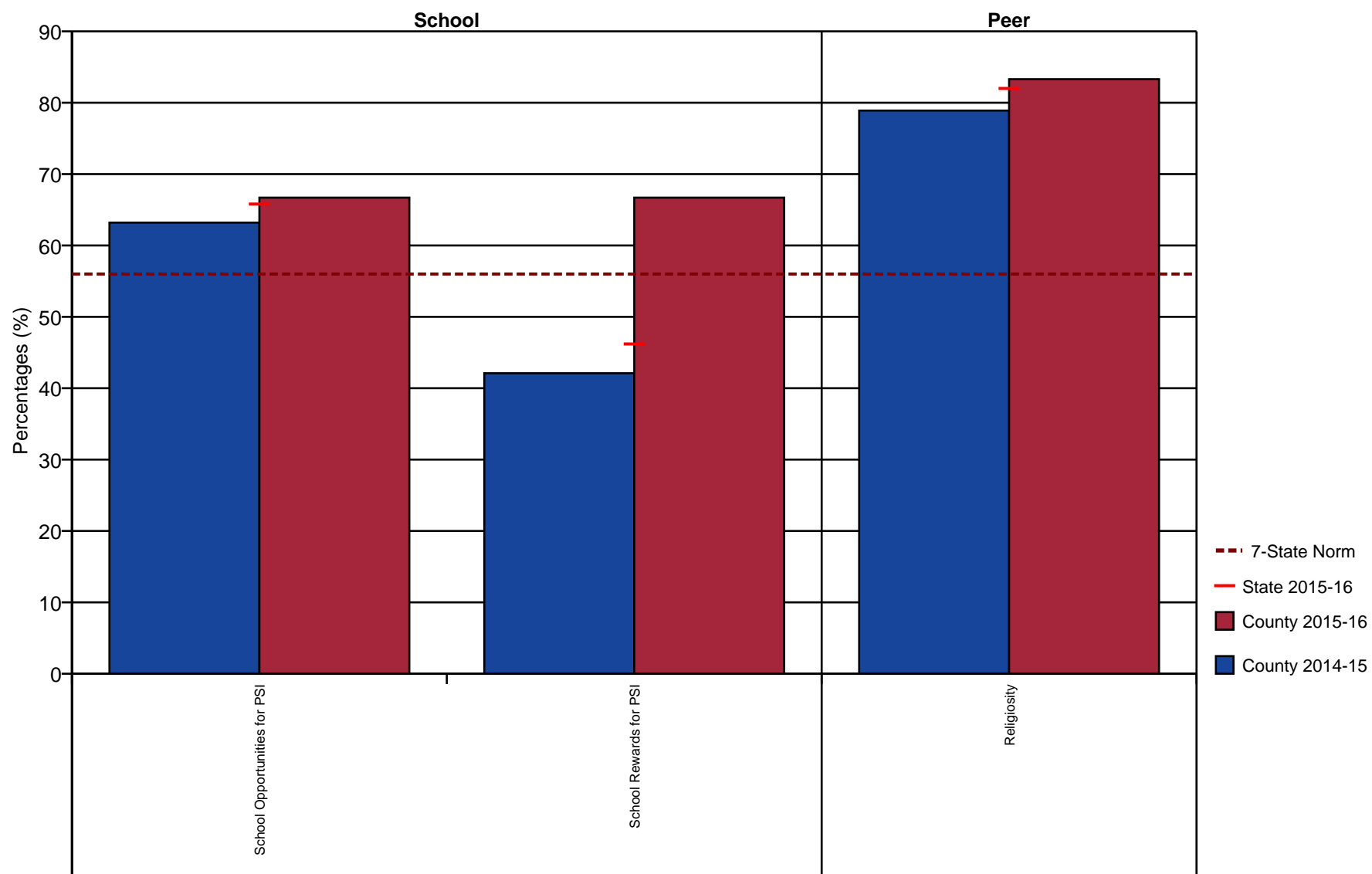


Figure 12: Protective Factors - Grade 12

School Safety Profile - Grade 8
Lafayette County

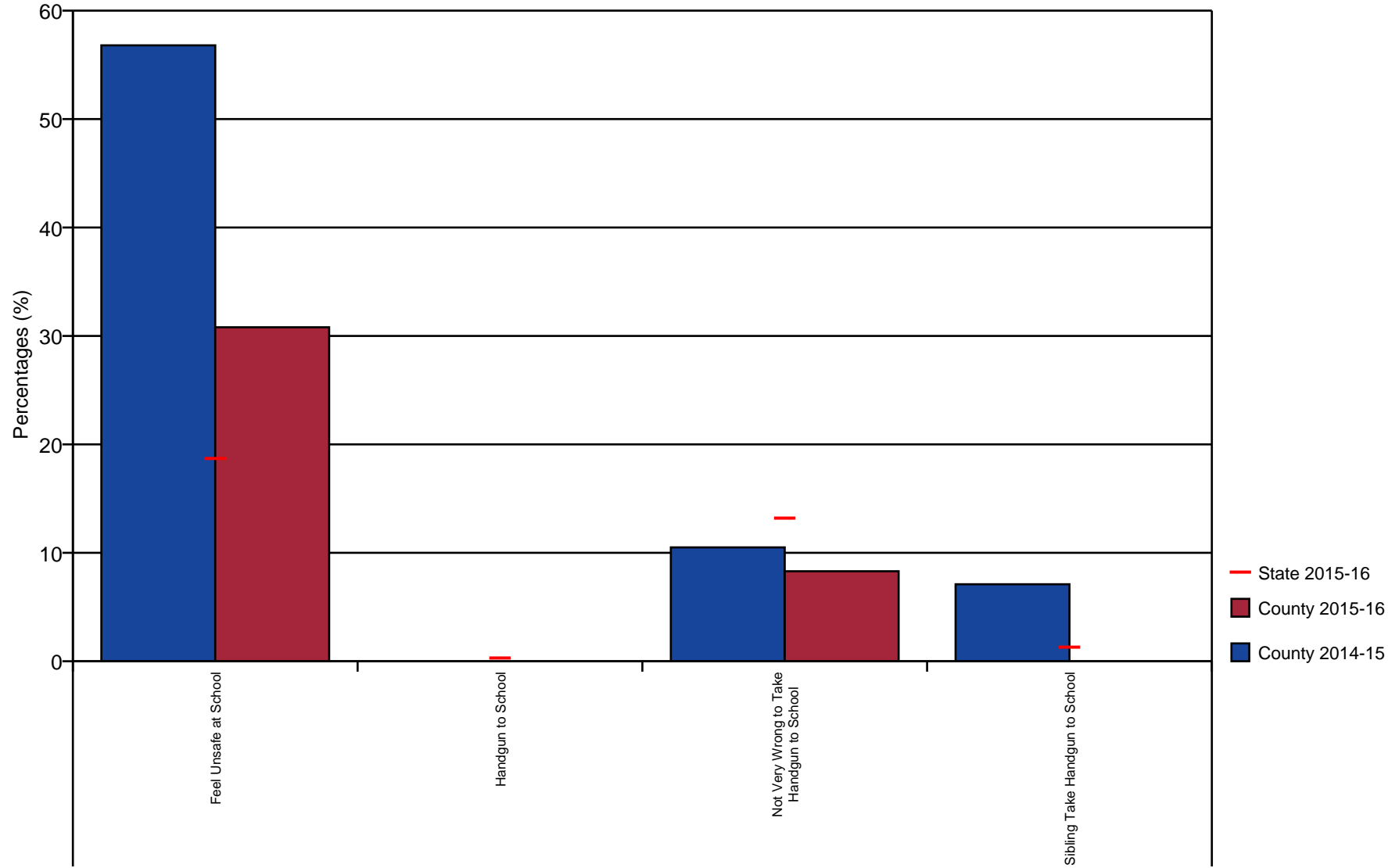


Figure 13: School Safety Profile - Grade 8

School Safety Profile - Grade 10

Lafayette County

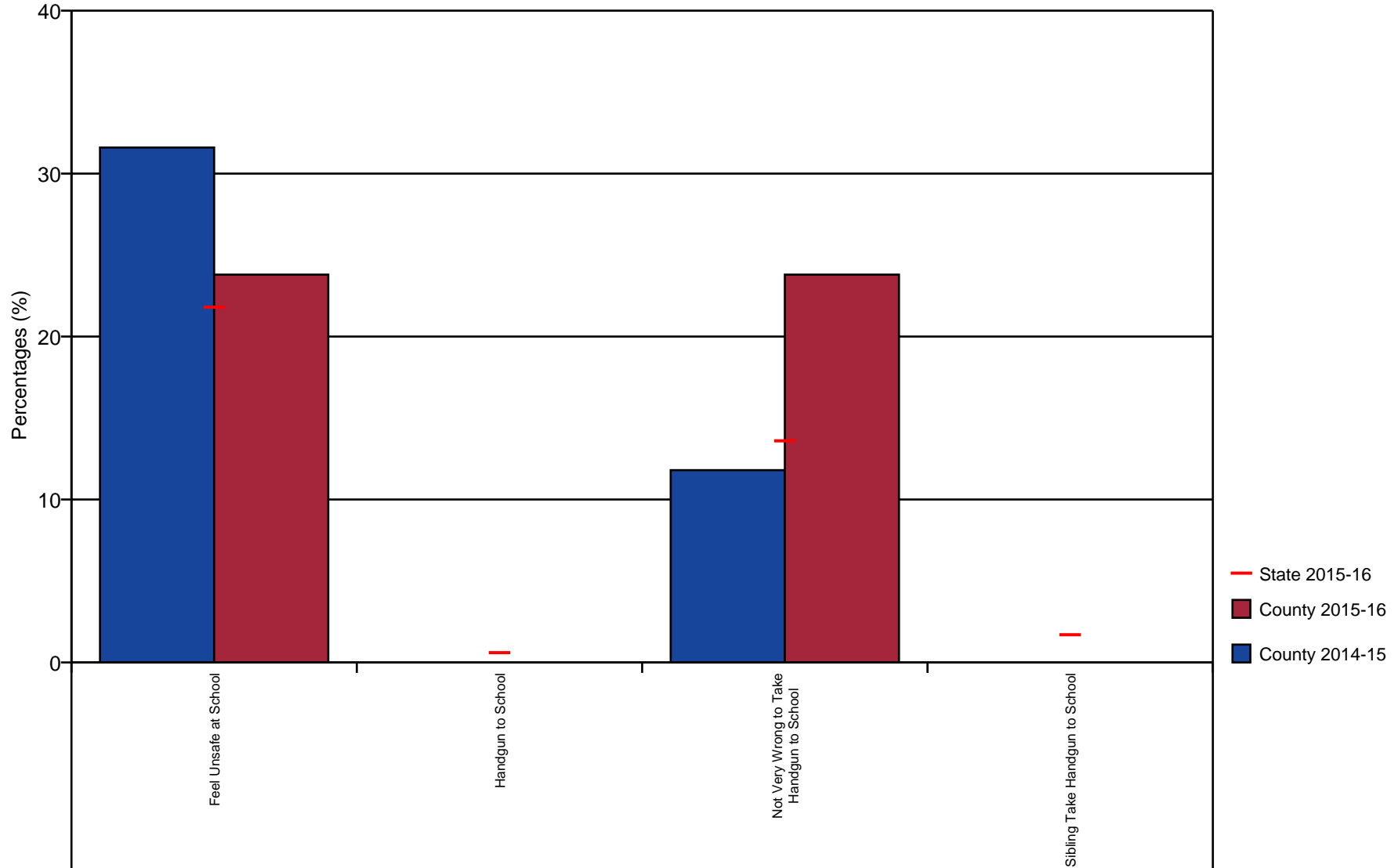


Figure 14: School Safety Profile - Grade 10

School Safety Profile - Grade 12

Lafayette County

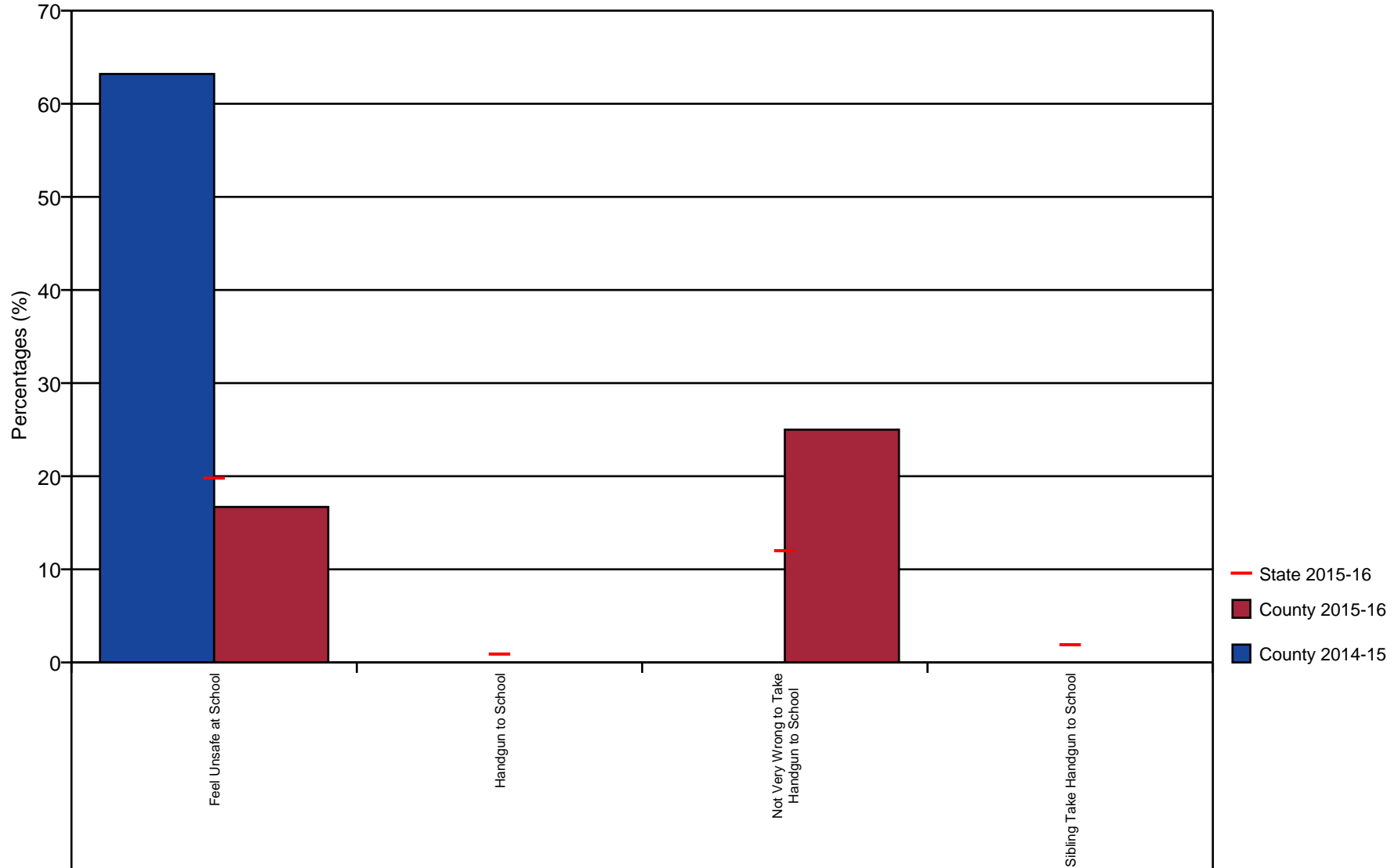


Figure 15: School Safety Profile - Grade 12

Sources and Locations of Alcohol Use - Grade 8

Lafayette County

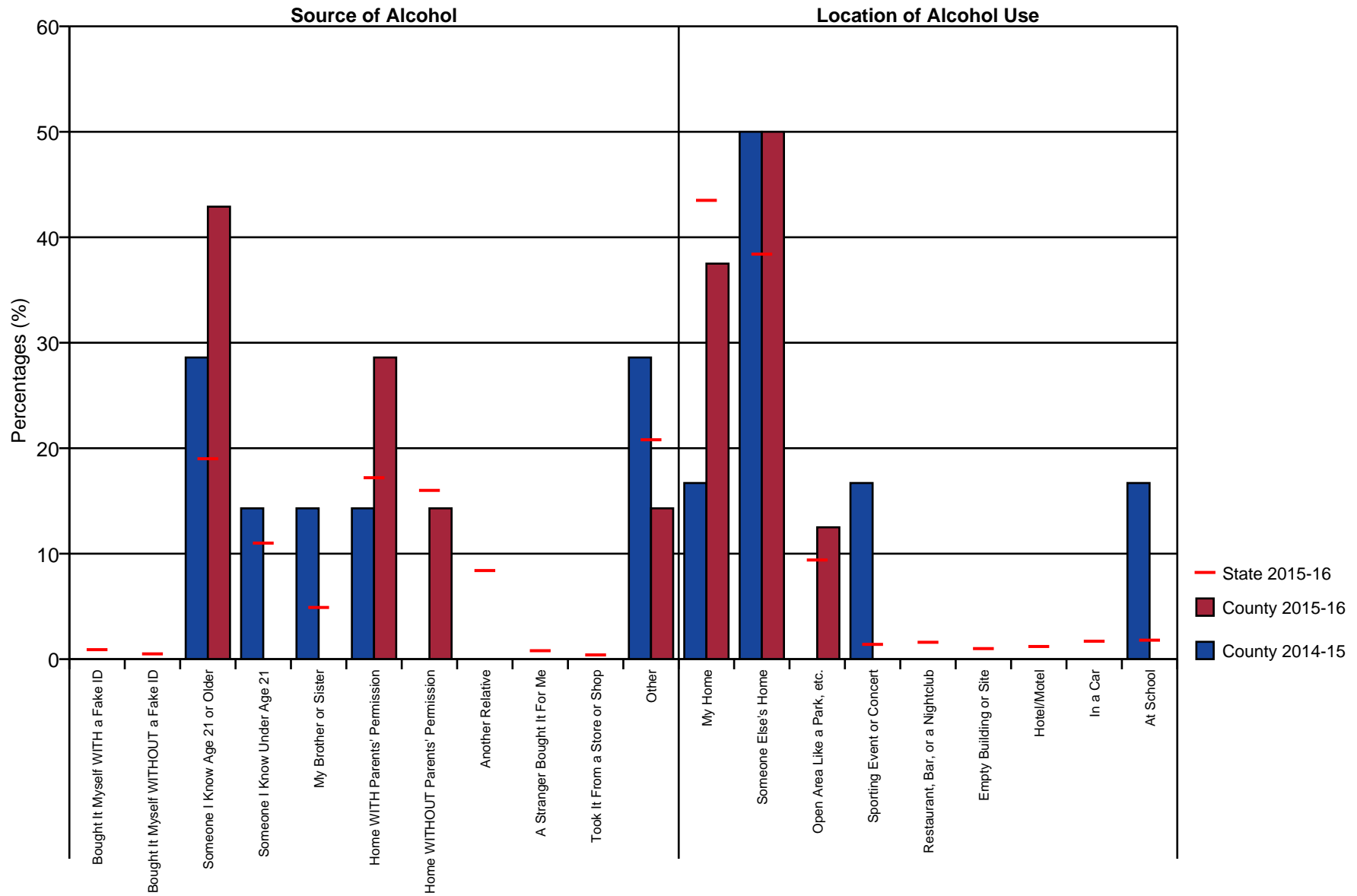


Figure 16: Sources and Locations of Alcohol Use - Grade 8

Sources and Locations of Alcohol Use - Grade 10

Lafayette County

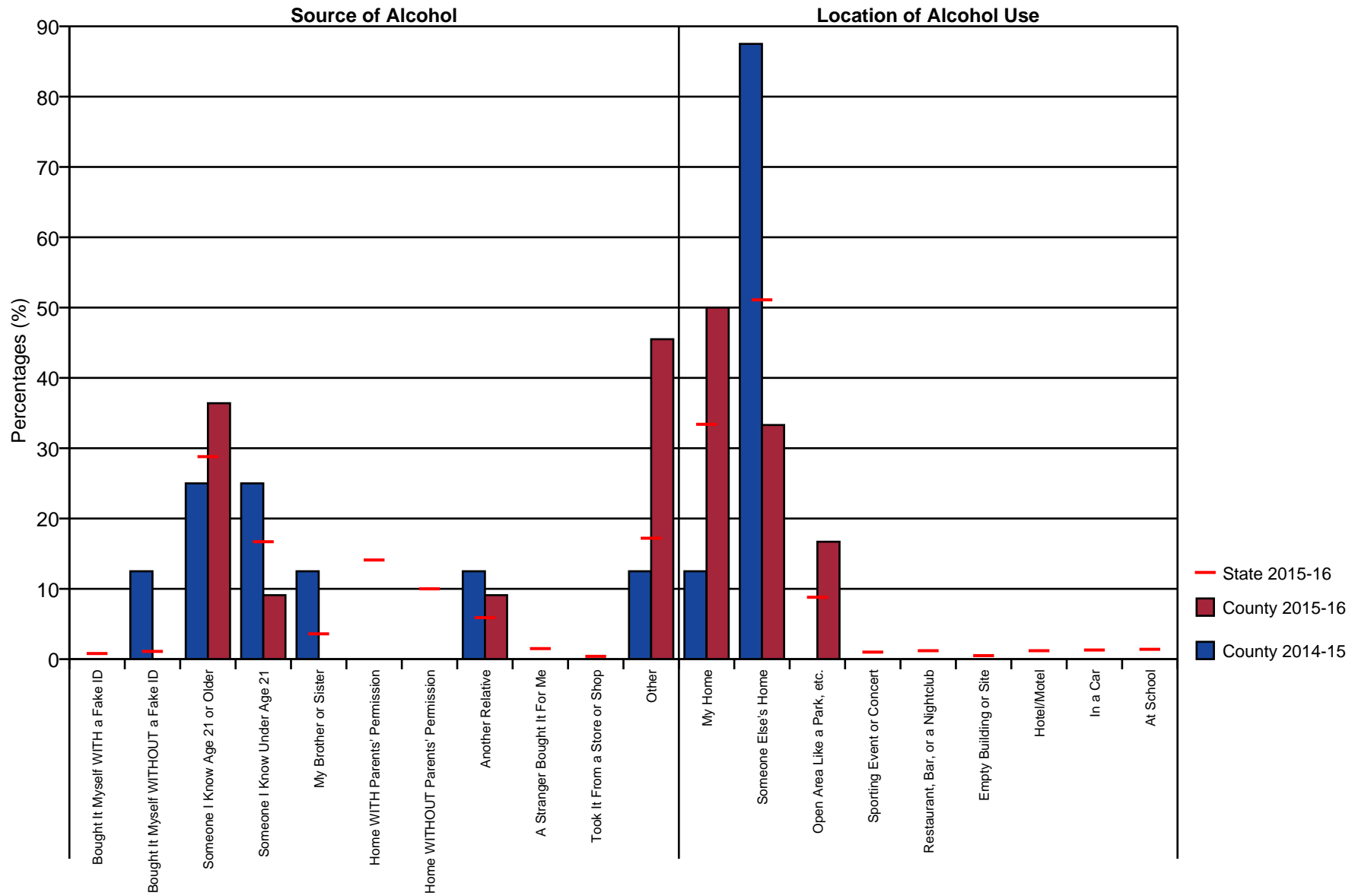


Figure 17: Sources and Locations of Alcohol Use - Grade 10

Sources and Locations of Alcohol Use - Grade 12

Lafayette County

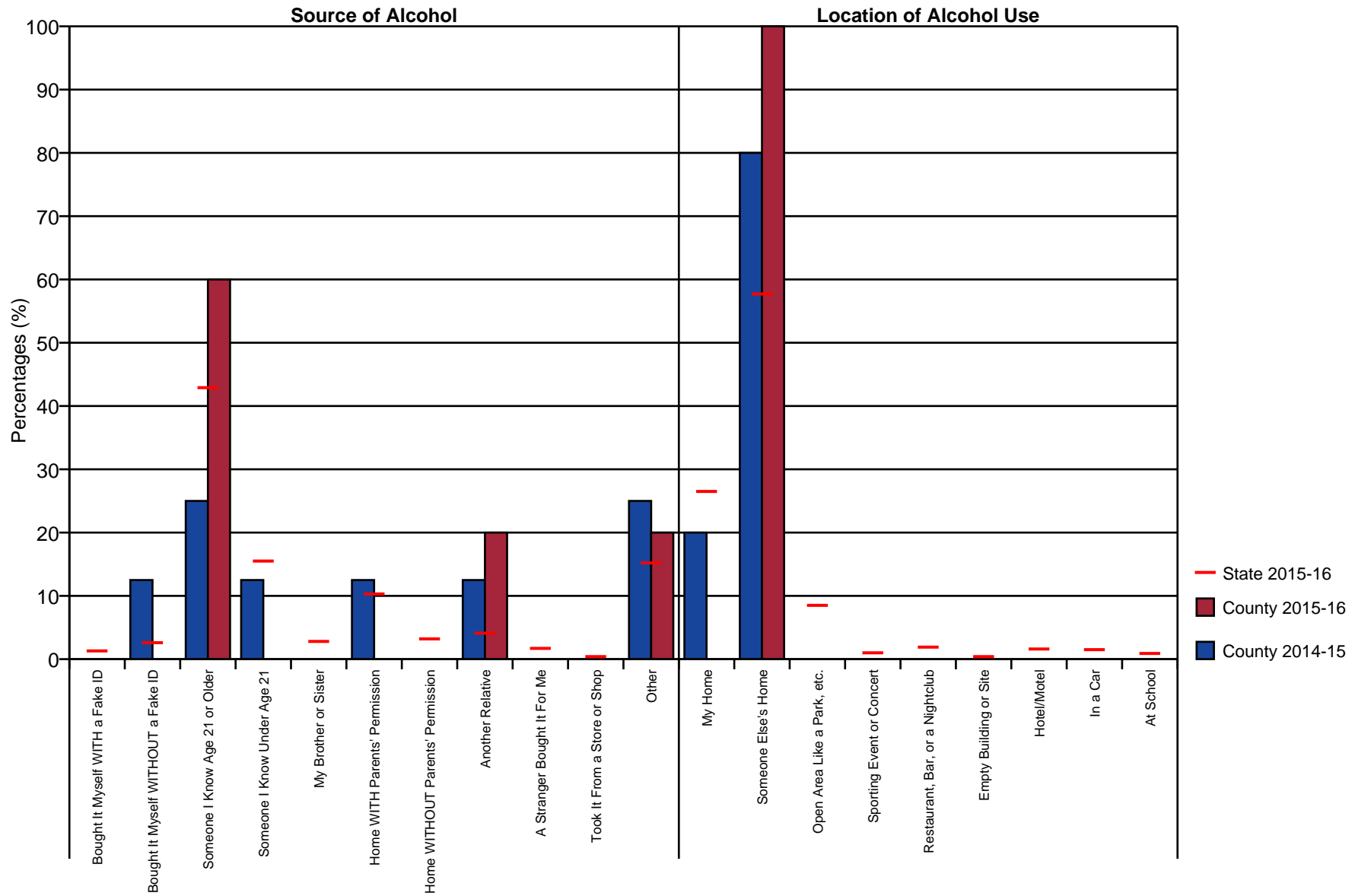


Figure 18: Sources and Locations of Alcohol Use - Grade 12

Table 5: Risk and Protective Factor Scale Definition

Community Domain Risk Factors	
Community Disorganization	Research has shown that neighborhoods with high population density, lack of natural surveillance of public places, physical deterioration, and high rates of adult crime also have higher rates of juvenile crime and drug selling.
Transitions and Mobility	Research has shown that transitions from school to school may be accompanied by significant increases in rates of drug use, school dropout and antisocial behavior.
Laws and Norms Favorable Toward Drug Use	Research has shown that legal restrictions on alcohol and tobacco use, such as raising the legal drinking age, restricting smoking in public places, and increased taxation have been followed by decreases in consumption. Moreover, national surveys of high school seniors have shown that shifts in normative attitudes toward drug use have preceded changes in prevalence of use.
Perceived Availability of Drugs	The availability of cigarettes, alcohol, marijuana, and other illegal drugs has been related to the use of these substances by adolescents.
Perceived Availability of Handguns	The availability of handguns has also been related to the use of these substances by adolescents.
Family Domain Risk Factors	
Poor Family Management	Parents' use of inconsistent and/or unusually harsh or severe punishment with their children places them at higher risk for substance use and other problem behaviors. Also, parents' failure to provide clear expectations and to monitor their children's behavior makes it more likely that they will engage in drug abuse whether or not there are family drug problems.
Family History of Antisocial Behavior	When children are raised in a family with a history of problem behaviors (e.g., violence or ATOD use), the children are more likely to engage in these behaviors.
Parental Attitudes Favorable Toward Drug Use	In families where parents use illegal drugs, are heavy users of alcohol, or are tolerant of children's use, children are more likely to become drug abusers during adolescence. The risk is further increased if parents involve children in their own drug (or alcohol) using behavior, for example, asking the child to light the parent's cigarette or get the parent a beer from the refrigerator.

continued on the next column

Risk and Protective Factor Scale Definition (continued)

Parental Attitudes Favorable Toward Antisocial Behavior	In families where parents are tolerant of their child's antisocial behavior (i.e. fighting, stealing, defacing property, etc.), children are more likely to become drug abusers during adolescence.
School Domain Risk Factors	
Academic Failure	Beginning in the late elementary grades (grades 4-6) academic failure increases the risk of both drug abuse and delinquency. It appears that the experience of failure itself, for whatever reasons, increases the risk of problem behaviors.
Low Commitment to School	Surveys of high school seniors have shown that the use of hallucinogens, cocaine, heroin, stimulants, and sedatives or non-medically prescribed tranquilizers is significantly lower among students who expect to attend college than among those who do not. Factors such as liking school, spending time on homework, and perceiving the coursework as relevant are also negatively related to drug use.
School Domain Protective Factors	
Opportunities for Prosocial Involvement	When young people are given more opportunities to participate meaningfully in important activities at school, they are less likely to engage in drug use and other problem behaviors.
Rewards for Prosocial Involvement	When young people are recognized and rewarded for their contributions at school, they are less likely to be involved in substance use and other problem behaviors.
Individual/Peer Risk Factors	
Early Initiation of Drug Use	Early onset of drug use predicts misuse of drugs. The earlier the onset of any drug use, the greater the involvement in other drug use and the greater frequency of use. Onset of drug use prior to the age of 15 is a consistent predictor of drug abuse, and a later age of onset of drug use has been shown to predict lower drug involvement and a greater probability of discontinuation of use.
Early Initiation of Antisocial Behavior	Early onset of antisocial behaviors such as being suspended from school, arrests, carrying handguns, fighting, etc. makes young people more likely to be involved in substance abuse.
Attitudes Favorable Toward Drug Use	During the elementary school years, most children express anti-drug, anti-crime, and pro-social attitudes and have difficulty imagining why people use drugs. However, in middle school, as more youth are exposed to others who use drugs, their attitudes often shift toward greater acceptance of these behaviors. Youth who express positive attitudes toward drug use are more likely to engage in a variety of problem behaviors, including drug use.

continued on the next column

Risk and Protective Factor Scale Definition (continued)

Attitudes Favorable Toward Antisocial Behavior	During the elementary school years, most children express anti-drug, anti-crime, and pro-social attitudes and have difficulty imagining why people engage in antisocial behaviors. However, in middle school, as more youth are exposed to others who engage in antisocial behavior, their attitudes often shift toward greater acceptance of these behaviors. Youth who express positive attitudes toward antisocial behavior are more likely to engage in a variety of problem behaviors, including antisocial behavior.
Low Perceived Risk of Drug Use	Young people who do not perceive drug use to be risky are far more likely to engage in drug use.
Interaction with Antisocial Peers	Young people who associate with peers who engage in problem behaviors are at higher risk for engaging in antisocial behavior themselves.
Friends' Use of Drugs	Young people who associate with peers who engage in alcohol or substance abuse are much more likely to engage in the same behavior. Peer drug use has consistently been found to be among the strongest predictors of substance use among youth. Even when young people come from well-managed families and do not experience other risk factors, spending time with friends who use drugs greatly increases the risk of that problem developing.
Rewards for Antisocial Involvement	Young people who receive rewards for their antisocial behavior are at higher risk for engaging further in antisocial behavior and substance use.
Depressive Symptoms	Young people who express feelings of sadness for long periods over the past year and who have negative attitudes about themselves and life in general are more likely to use drugs.
Gang Involvement	Gang involvement by young people is strongly related to many problem behaviors including drug use.
Individual/Peer Protective Factors	
Religiosity	Young people who regularly attend religious services are less likely to engage in problem behaviors.

Table 6: Alcohol - Lifetime Use

Grade	Group	2012-13	2013-14	2014-15	2015-16
6	county	6.6	0.0	13.3	0.0
	state	9.7	8.5	8.5	8.2
8	county	31.0	0.0	20.0	26.3
	state	26.6	23.4	23.2	22.3
	MTF	29.5	27.8	26.8	26.1
10	county	52.6	0.0	37.5	45.0
	state	47.9	45.5	45.2	42.5
	MTF	54.0	52.1	49.3	47.1
12	county	53.1	0.0	38.9	60.0
	state	61.1	58.8	58.7	55.8
	MTF	69.4	68.2	66.0	64.0
Combined	county	34.7	0.0	24.6	40.8
	state	33.9	31.5	31.2	29.7

Table 7: Cigarettes - Lifetime Use

Grade	Group	2012-13	2013-14	2014-15	2015-16
6	county	12.9	0.0	6.5	0.0
	state	7.9	7.0	6.3	5.7
8	county	25.0	0.0	23.7	21.7
	state	20.6	18.0	18.0	15.5
	MTF	15.5	14.8	13.5	13.3
10	county	45.0	0.0	20.0	38.1
	state	32.9	30.6	29.5	26.3
	MTF	27.7	25.7	22.6	19.9
12	county	46.0	0.0	33.3	54.5
	state	42.1	39.6	39.4	35.3
	MTF	39.5	38.1	34.4	31.1
Combined	county	31.2	0.0	18.2	34.5
	state	24.2	22.2	21.5	19.1

Table 8: Chewing Tobacco - Lifetime Use

Grade	Group	2012-13	2013-14	2014-15	2015-16
6	county	9.7	0.0	8.7	0.0
	state	5.3	4.7	4.7	4.1
8	county	10.0	0.0	23.7	8.7
	state	12.1	11.1	11.3	9.9
	MTF	8.1	7.9	8.0	8.6
10	county	18.3	0.0	11.4	33.3
	state	19.5	18.8	18.4	16.9
	MTF	15.4	14.0	13.6	12.3
12	county	31.4	0.0	5.6	18.2
	state	23.6	22.2	22.4	19.9
	MTF	17.4	17.2	15.1	13.2
Combined	county	16.5	0.0	13.1	20.0
	state	14.2	13.3	13.2	11.9

Table 9: Marijuana - Lifetime Use

Grade	Group	2012-13	2013-14	2014-15	2015-16
6	county	1.6	0.0	2.2	0.0
	state	1.4	1.3	1.4	1.3
8	county	8.8	0.0	2.9	0.0
	state	9.4	8.9	9.1	8.2
	MTF	15.2	16.5	15.6	15.5
10	county	31.6	0.0	9.7	5.0
	state	24.5	23.9	23.3	21.7
	MTF	33.8	35.8	33.7	31.1
12	county	20.8	0.0	16.7	30.0
	state	35.6	34.3	35.5	33.1
	MTF	45.2	45.5	44.4	44.7
Combined	county	15.2	0.0	6.2	8.2
	state	16.0	15.3	15.4	14.3

Table 10: Hallucinogens - Lifetime Use

Grade	Group	2012-13	2013-14	2014-15	2015-16
6	county	0.0	0.0	0.0	0.0
	state	0.1	0.2	0.2	0.2
8	county	0.0	0.0	0.0	0.0
	state	0.7	0.7	0.7	0.6
MTF		1.3	1.4	1.1	1.3
10	county	3.5	0.0	0.0	0.0
	state	2.3	1.9	2.1	2.2
MTF		2.6	2.7	2.6	3.0
12	county	2.0	0.0	0.0	10.0
	state	3.6	3.6	3.8	4.2
MTF		3.8	3.9	3.7	4.3
Combined	county	1.3	0.0	0.0	2.0
	state	1.5	1.4	1.5	1.6

Table 11: Cocaine - Lifetime Use

Grade	Group	2012-13	2013-14	2014-15	2015-16
6	county	0.0	0.0	0.0	0.0
	state	0.3	0.4	0.3	0.3
8	county	0.0	0.0	0.0	0.0
	state	0.9	0.9	0.9	0.7
MTF		1.9	1.7	1.8	1.6
10	county	1.8	0.0	0.0	5.0
	state	1.8	1.5	1.6	1.5
MTF		3.3	3.3	2.6	2.7
12	county	0.0	0.0	0.0	0.0
	state	2.8	2.6	2.6	2.8
MTF		4.9	4.5	4.6	4.0
Combined	county	0.4	0.0	0.0	2.0
	state	1.3	1.2	1.2	1.2

Table 12: Inhalants - Lifetime Use

Grade	Group	2012-13	2013-14	2014-15	2015-16
6	county	4.9	0.0	2.2	0.0
	state	4.0	3.5	3.5	3.1
8	county	7.0	0.0	17.1	5.3
	state	8.5	7.1	6.9	5.7
MTF		11.8	10.8	10.8	9.4
10	county	19.3	0.0	0.0	5.0
	state	8.8	7.7	6.8	5.9
MTF		9.9	8.7	8.7	7.2
12	county	4.0	0.0	5.6	0.0
	state	7.4	6.1	5.6	5.0
MTF		7.9	6.9	6.5	5.7
Combined	county	8.9	0.0	6.1	4.1
	state	7.1	6.1	5.7	4.9

Table 13: Synthetic Marijuana - Lifetime Use

Grade	Group	2012-13	2013-14	2014-15	2015-16
6	county	0.0	0.0	0.0	0.0
	state	0.5	0.4	0.4	0.4
8	county	1.8	0.0	0.0	0.0
	state	3.0	2.4	2.1	1.5
10	county	8.9	0.0	0.0	5.0
	state	8.8	6.1	4.4	3.5
12	county	4.0	0.0	5.6	10.0
	state	13.2	10.1	7.6	5.3
Combined	county	3.6	0.0	0.8	4.1
	state	5.7	4.2	3.2	2.4

Table 14: Meth - Lifetime Use

Grade	Group	2012-13	2013-14	2014-15	2015-16
6	county	0.0	0.0	0.0	0.0
	state	0.3	0.3	0.2	0.2
8	county	0.0	0.0	0.0	0.0
	state	0.8	0.7	0.7	0.6
MTF		1.3	1.4	1.0	0.8
10	county	0.0	0.0	0.0	5.3
	state	1.8	1.4	1.3	1.2
MTF		1.8	1.6	1.4	1.3
12	county	0.0	0.0	0.0	0.0
	state	2.2	2.1	2.0	1.6
MTF		1.7	1.5	1.9	1.0
Combined	county	0.0	0.0	0.0	2.1
	state	1.2	1.0	0.9	0.8

Table 15: Bath Salts - Lifetime Use

Grade	Group	2012-13	2013-14	2014-15	2015-16
6	county	0.0	0.0	2.2	0.0
	state	1.2	1.2	1.5	1.8
8	county	1.8	0.0	0.0	0.0
	state	1.2	0.9	1.1	1.4
10	county	1.8	0.0	0.0	5.3
	state	1.0	0.8	0.7	0.7
12	county	0.0	0.0	0.0	0.0
	state	0.8	0.7	0.7	0.6
Combined	county	0.9	0.0	0.8	2.1
	state	1.1	1.0	1.0	1.2

Table 16: Heroin - Lifetime Use

Grade	Group	2012-13	2013-14	2014-15	2015-16
6	county	0.0	0.0	0.0	0.0
	state	0.1	0.2	0.2	0.1
8	county	0.0	0.0	0.0	0.0
	state	0.6	0.5	0.5	0.3
MTF		0.8	1.0	0.9	0.5
10	county	3.5	0.0	3.1	0.0
	state	1.2	1.0	0.9	0.8
MTF		1.1	1.0	0.9	0.7
12	county	0.0	0.0	0.0	0.0
	state	2.0	1.7	1.5	1.6
MTF		1.1	1.0	1.0	0.8
Combined	county	0.9	0.0	0.8	0.0
	state	0.9	0.8	0.7	0.6

Table 17: Ecstasy - Lifetime Use

Grade	Group	2012-13	2013-14	2014-15	2015-16
6	county	0.0	0.0	0.0	0.0
	state	0.1	0.1	0.1	0.1
8	county	3.5	0.0	0.0	0.0
	state	0.8	0.7	0.6	0.5
MTF		2.0	1.8	1.4	2.3
10	county	3.6	0.0	0.0	0.0
	state	2.5	2.0	1.9	1.5
MTF		5.0	5.7	3.7	3.8
12	county	0.0	0.0	0.0	0.0
	state	4.0	3.5	2.7	2.8
MTF		7.2	7.1	5.6	5.9
Combined	county	1.8	0.0	0.0	0.0
	state	1.7	1.4	1.2	1.1

Table 18: Prescription Drugs - Lifetime Use

Grade	Group	2012-13	2013-14	2014-15	2015-16
6	county	0.0	0.0	0.0	0.0
	state	1.9	1.8	1.9	2.2
8	county	1.8	0.0	2.9	0.0
	state	5.0	4.4	5.1	5.0
10	county	16.1	0.0	0.0	0.0
	state	11.7	10.3	11.0	10.3
12	county	6.0	0.0	16.7	0.0
	state	15.7	14.3	15.5	14.1
MTF		21.2	21.5	19.9	18.3
Combined	county	5.8	0.0	3.1	0.0
	state	7.9	7.0	7.6	7.2

Table 19: Over-The-Counter Drugs - Lifetime Use

Grade	Group	2012-13	2013-14	2014-15	2015-16
6	county	0.0	0.0	0.0	0.0
	state	1.0	0.9	0.9	1.0
8	county	3.5	0.0	2.9	0.0
	state	2.6	2.5	2.4	2.5
10	county	5.4	0.0	3.2	0.0
	state	5.3	5.3	4.6	4.3
12	county	2.0	0.0	5.6	0.0
	state	6.7	5.9	5.5	5.2
Combined	county	2.7	0.0	2.3	0.0
	state	3.7	3.4	3.1	3.0

Table 20: Alcopops - Lifetime Use

Grade	Group	2012-13	2013-14	2014-15	2015-16
6	county	4.9	0.0	6.5	0.0
	state	4.6	3.8	3.7	3.3
8	county	17.5	0.0	2.9	15.8
	state	16.5	14.3	13.9	12.4
MTF		23.5	21.9	19.2	19.3
10	county	42.9	0.0	20.0	29.4
	state	32.6	30.1	28.9	26.9
MTF		46.7	44.9	42.3	38.7
12	county	27.1	0.0	16.7	20.0
	state	43.1	40.5	39.9	37.2
MTF		60.5	58.9	57.5	55.6
Combined	county	22.5	0.0	10.1	21.7
	state	22.4	20.3	19.7	18.1

Table 21: Any Drug - Lifetime Use

Grade	Group	2012-13	2013-14	2014-15	2015-16
6	county	4.9	0.0	6.5	0.0
	state	7.5	6.8	7.4	7.2
8	county	16.9	0.0	22.9	5.3
	state	17.6	16.0	16.3	15.3
10	county	49.1	0.0	15.2	10.0
	state	31.0	29.4	28.9	27.2
12	county	24.0	0.0	22.2	30.0
	state	40.1	38.3	39.7	36.9
Combined	county	23.3	0.0	15.2	12.2
	state	22.5	21.0	21.3	20.1

Table 22: Alcohol - Past 30 Day Use

Grade	Group	2012-13	2013-14	2014-15	2015-16
6	county	6.6	0.0	2.2	0.0
	state	1.8	1.6	1.5	1.2
8	county	12.3	0.0	5.9	11.1
	state	8.7	7.0	7.6	6.8
MTF		11.0	10.2	9.0	9.7
10	county	25.0	0.0	3.1	20.0
	state	20.5	19.0	19.5	18.1
MTF		27.6	25.7	23.5	21.5
12	county	24.5	0.0	16.7	30.0
	state	31.1	29.0	30.2	27.8
MTF		41.5	39.2	37.4	35.3
Combined	county	16.6	0.0	5.4	18.8
	state	14.0	12.6	13.0	12.0

Table 23: Cigarettes - Past 30 Day Use

Grade	Group	2012-13	2013-14	2014-15	2015-16
6	county	3.2	0.0	0.0	0.0
	state	1.4	1.3	1.1	0.8
8	county	8.8	0.0	8.1	8.7
	state	5.2	4.5	4.6	3.6
	MTF	4.9	4.5	4.0	3.6
10	county	23.3	0.0	5.7	14.3
	state	12.5	10.9	10.3	8.7
	MTF	10.8	9.1	7.2	6.3
12	county	24.0	0.0	22.2	45.5
	state	18.9	17.5	16.7	14.2
	MTF	17.1	16.3	13.6	11.4
Combined	county	14.2	0.0	6.6	18.2
	state	8.6	7.6	7.3	6.0

Table 24: Chewing Tobacco - Past 30 Day Use

Grade	Group	2012-13	2013-14	2014-15	2015-16
6	county	3.2	0.0	0.0	0.0
	state	1.4	1.3	1.2	1.1
8	county	5.8	0.0	5.3	4.3
	state	4.7	4.3	4.2	3.4
	MTF	2.8	2.8	3.0	3.2
10	county	10.0	0.0	5.7	23.8
	state	9.2	8.4	8.5	7.2
	MTF	6.4	6.4	5.3	4.9
12	county	21.6	0.0	0.0	9.1
	state	11.2	10.4	10.4	9.1
	MTF	7.9	8.1	8.4	6.1
Combined	county	9.5	0.0	2.9	12.7
	state	6.1	5.6	5.6	4.8

Table 25: Marijuana - Past 30 Day Use

Grade	Group	2012-13	2013-14	2014-15	2015-16
6	county	0.0	0.0	0.0	0.0
	state	0.4	0.5	0.6	0.5
8	county	3.4	0.0	0.0	0.0
	state	4.1	3.9	4.3	3.5
	MTF	6.5	7.0	6.5	6.5
10	county	14.0	0.0	0.0	5.0
	state	11.8	11.2	11.4	10.2
	MTF	17.0	18.0	16.6	14.8
12	county	8.0	0.0	5.6	20.0
	state	17.0	16.3	16.6	16.2
	MTF	22.9	22.7	21.2	21.3
Combined	county	6.2	0.0	0.8	6.2
	state	7.5	7.1	7.3	6.7

Table 26: Hallucinogens - Past 30 Day Use

Grade	Group	2012-13	2013-14	2014-15	2015-16
6	county	0.0	0.0	0.0	0.0
	state	0.1	0.1	0.1	0.1
8	county	0.0	0.0	0.0	0.0
	state	0.3	0.3	0.3	0.2
	MTF	–	0.5	0.3	0.4
10	county	1.8	0.0	0.0	0.0
	state	0.8	0.6	0.7	0.6
	MTF	–	0.6	0.6	0.6
12	county	0.0	0.0	0.0	0.0
	state	1.0	1.0	0.9	1.2
	MTF	0.8	0.8	1.0	1.1
Combined	county	0.4	0.0	0.0	0.0
	state	0.5	0.4	0.4	0.4

Table 27: Cocaine - Past 30 Day Use

Grade	Group	2012-13	2013-14	2014-15	2015-16
6	county	0.0	0.0	0.0	0.0
	state	0.1	0.2	0.2	0.1
8	county	0.0	0.0	0.0	0.0
	state	0.4	0.4	0.4	0.3
	MTF	—	0.5	0.5	0.5
10	county	1.8	0.0	0.0	5.0
	state	0.6	0.4	0.5	0.4
	MTF	—	0.8	0.6	0.8
12	county	0.0	0.0	0.0	0.0
	state	0.6	0.6	0.7	0.7
	MTF	1.1	1.1	1.0	1.1
Combined	county	0.4	0.0	0.0	2.0
	state	0.4	0.4	0.4	0.4

Table 28: Inhalants - Past 30 Day Use

Grade	Group	2012-13	2013-14	2014-15	2015-16
6	county	1.6	0.0	2.2	0.0
	state	1.7	1.5	1.5	1.3
8	county	8.8	0.0	14.3	0.0
	state	3.3	2.6	2.6	2.2
	MTF	—	2.3	2.2	2.0
10	county	7.1	0.0	0.0	5.0
	state	2.5	2.1	1.8	1.5
	MTF	—	1.3	1.1	1.2
12	county	0.0	0.0	0.0	0.0
	state	1.4	1.1	1.1	1.0
	MTF	0.9	1.0	0.7	0.7
Combined	county	4.5	0.0	4.6	2.1
	state	2.3	1.9	1.8	1.6

Table 29: Synthetic Marijuana - Past 30 Day Use

Grade	Group	2012-13	2013-14	2014-15	2015-16
6	county	0.0	0.0	0.0	0.0
	state	0.2	0.2	0.1	0.2
8	county	0.0	0.0	0.0	0.0
	state	1.2	0.9	0.8	0.6
10	county	1.8	0.0	0.0	0.0
	state	2.3	1.6	1.1	0.9
12	county	0.0	0.0	0.0	0.0
	state	2.6	1.4	1.1	0.8
Combined	county	0.4	0.0	0.0	0.0
	state	1.5	1.0	0.7	0.6

Table 30: Meth - Past 30 Day Use

Grade	Group	2012-13	2013-14	2014-15	2015-16
6	county	0.0	0.0	0.0	0.0
	state	0.1	0.1	0.1	0.1
8	county	0.0	0.0	0.0	0.0
	state	0.3	0.3	0.3	0.2
	MTF	—	0.4	0.2	0.3
10	county	1.8	0.0	0.0	5.3
	state	0.6	0.4	0.4	0.4
	MTF	—	0.4	0.3	0.3
12	county	0.0	0.0	0.0	0.0
	state	0.7	0.5	0.6	0.5
	MTF	0.5	0.4	0.5	0.4
Combined	county	0.4	0.0	0.0	2.1
	state	0.4	0.3	0.3	0.3

Table 31: Bath Salts - Past 30 Day Use

Grade	Group	2012-13	2013-14	2014-15	2015-16
6	county	0.0	0.0	2.2	0.0
	state	0.4	0.5	0.6	0.7
8	county	0.0	0.0	0.0	0.0
	state	0.5	0.4	0.5	0.6
10	county	0.0	0.0	0.0	5.3
	state	0.5	0.3	0.3	0.3
12	county	0.0	0.0	0.0	0.0
	state	0.3	0.3	0.2	0.3
Combined	county	0.0	0.0	0.8	2.1
	state	0.5	0.4	0.4	0.5

Table 32: Heroin - Past 30 Day Use

Grade	Group	2012-13	2013-14	2014-15	2015-16
6	county	0.0	0.0	0.0	0.0
	state	0.0	0.1	0.1	0.1
8	county	0.0	0.0	0.0	0.0
	state	0.2	0.2	0.3	0.1
	MTF	—	0.3	0.3	0.1
10	county	1.8	0.0	3.1	0.0
	state	0.4	0.4	0.3	0.3
	MTF	—	0.3	0.4	0.2
12	county	0.0	0.0	0.0	0.0
	state	0.7	0.6	0.5	0.5
	MTF	0.3	0.3	0.4	0.3
Combined	county	0.5	0.0	0.8	0.0
	state	0.3	0.3	0.3	0.2

Table 33: Ecstasy - Past 30 Day Use

Grade	Group	2012-13	2013-14	2014-15	2015-16
6	county	0.0	0.0	0.0	0.0
	state	0.1	0.1	0.1	0.1
8	county	1.8	0.0	2.9	0.0
	state	0.3	0.3	0.2	0.2
	MTF	—	0.5	0.4	0.5
10	county	1.8	0.0	0.0	0.0
	state	0.8	0.6	0.6	0.4
	MTF	—	1.2	0.8	0.9
12	county	0.0	0.0	0.0	0.0
	state	1.0	0.7	0.6	0.7
	MTF	0.9	1.5	1.4	1.1
Combined	county	0.9	0.0	0.8	0.0
	state	0.5	0.4	0.3	0.3

Table 34: Prescription Drugs - Past 30 Day Use

Grade	Group	2012-13	2013-14	2014-15	2015-16
6	county	0.0	0.0	0.0	0.0
	state	0.8	0.9	0.9	1.1
8	county	1.8	0.0	0.0	0.0
	state	2.2	2.2	2.5	2.3
10	county	8.9	0.0	0.0	0.0
	state	5.4	4.7	5.1	4.8
12	county	0.0	0.0	11.1	0.0
	state	7.0	5.7	6.4	5.8
	MTF	7.0	7.0	6.4	5.9
Combined	county	2.7	0.0	1.5	0.0
	state	3.5	3.1	3.4	3.2

Table 35: Over-The-Counter Drugs - Past 30 Day Use

Grade	Group	2012-13	2013-14	2014-15	2015-16
6	county	0.0	0.0	0.0	0.0
	state	0.6	0.5	0.5	0.5
8	county	1.8	0.0	2.9	0.0
	state	1.3	1.3	1.2	1.3
10	county	3.6	0.0	3.2	0.0
	state	2.4	2.3	2.0	2.0
12	county	0.0	0.0	5.6	0.0
	state	2.5	2.1	2.0	1.9
Combined	county	1.3	0.0	2.3	0.0
	state	1.6	1.5	1.4	1.4

Table 36: Alcopops - Past 30 Day Use

Grade	Group	2012-13	2013-14	2014-15	2015-16
6	county	3.3	0.0	0.0	0.0
	state	1.4	1.3	1.1	0.9
8	county	12.3	0.0	5.7	10.5
	state	6.2	5.2	5.2	4.5
	MTF	7.6	6.3	5.7	5.5
10	county	17.9	0.0	3.3	10.5
	state	13.7	12.2	12.4	11.3
	MTF	16.3	15.5	14.0	12.8
12	county	16.0	0.0	11.1	10.0
	state	18.4	17.3	18.4	17.1
	MTF	21.8	21.0	19.9	20.8
Combined	county	12.1	0.0	3.9	10.4
	state	9.1	8.2	8.3	7.6

Table 37: Any Drug - Past 30 Day Use

Grade	Group	2012-13	2013-14	2014-15	2015-16
6	county	1.6	0.0	2.2	0.0
	state	3.5	3.4	3.4	3.6
8	county	12.1	0.0	17.1	0.0
	state	8.6	7.9	8.3	7.5
10	county	26.3	0.0	6.1	10.0
	state	16.2	15.3	15.1	14.0
12	county	8.0	0.0	11.1	20.0
	state	21.0	19.8	20.3	19.5
Combined	county	11.9	0.0	8.3	8.2
	state	11.5	10.8	10.9	10.3

Table 38: Binge Drinking

Grade	Group	2012-13	2013-14	2014-15	2015-16
6	county	1.6	0.0	0.0	0.0
	state	0.8	0.8	0.8	0.6
8	county	7.0	0.0	2.9	5.6
	state	5.0	4.1	4.4	3.7
10	county	13.2	0.0	3.2	5.3
	state	13.2	11.6	12.0	10.9
12	county	10.0	0.0	16.7	10.0
	state	20.4	18.8	19.5	17.6
Combined	county	7.7	0.0	3.8	6.4
	state	8.9	7.8	8.1	7.2

Table 39: Pack of Cigarettes

Grade	Group	2012-13	2013-14	2014-15	2015-16
6	county	0.0	0.0	0.0	0.0
	state	0.1	0.1	0.1	0.0
8	county	1.5	0.0	0.0	4.3
	state	0.4	0.3	0.3	0.2
10	county	1.7	0.0	0.0	4.8
	state	1.1	0.9	0.7	0.7
12	county	4.0	0.0	0.0	0.0
	state	2.1	1.6	1.5	1.2
Combined	county	1.7	0.0	0.0	3.6
	state	0.8	0.6	0.6	0.5

Table 40: Suspended from School

Grade	Group	2012-13	2013-14	2014-15	2015-16
6	county	29.0	0.0	15.2	0.0
	state	11.2	10.1	10.0	9.5
8	county	16.7	0.0	32.4	8.7
	state	14.3	13.5	13.4	12.5
10	county	22.2	0.0	8.3	4.8
	state	12.6	11.4	11.4	10.5
12	county	13.5	0.0	15.8	25.0
	state	9.4	8.8	8.5	8.1
Combined	county	20.4	0.0	18.1	10.7
	state	12.1	11.2	11.0	10.4

Table 41: Drunk or High at School

Grade	Group	2012-13	2013-14	2014-15	2015-16
6	county	0.0	0.0	0.0	0.0
	state	1.2	1.3	1.1	0.9
8	county	7.8	0.0	0.0	0.0
	state	6.0	5.2	5.3	4.6
10	county	14.3	0.0	2.9	9.5
	state	13.9	12.3	11.5	10.6
12	county	5.8	0.0	15.8	33.3
	state	16.9	15.8	15.1	14.1
Combined	county	7.1	0.0	2.9	10.9
	state	8.8	7.9	7.5	6.8

Table 42: Sold Illegal Drugs

Grade	Group	2012-13	2013-14	2014-15	2015-16
6	county	0.0	0.0	0.0	0.0
	state	0.3	0.4	0.4	0.2
8	county	3.8	0.0	2.6	0.0
	state	1.9	1.8	1.8	1.7
10	county	4.8	0.0	0.0	0.0
	state	5.7	5.3	5.0	4.7
12	county	3.8	0.0	0.0	8.3
	state	7.5	6.8	7.1	6.4
Combined	county	3.2	0.0	0.7	1.8
	state	3.5	3.2	3.2	2.9

Table 43: Stolen a Vehicle

Grade	Group	2012-13	2013-14	2014-15	2015-16
6	county	0.0	0.0	0.0	0.0
	state	0.9	0.8	0.9	0.8
8	county	1.3	0.0	5.3	4.3
	state	1.5	1.3	1.2	1.3
10	county	6.3	0.0	0.0	0.0
	state	2.1	1.7	1.6	1.6
12	county	3.8	0.0	0.0	0.0
	state	1.6	1.3	1.3	1.2
Combined	county	2.8	0.0	1.4	1.8
	state	1.5	1.2	1.2	1.2

Table 44: Been Arrested

Grade	Group	2012-13	2013-14	2014-15	2015-16
6	county	0.0	0.0	0.0	0.0
	state	1.4	1.4	1.2	1.1
8	county	3.9	0.0	2.6	0.0
	state	4.0	3.3	3.1	2.5
10	county	9.7	0.0	0.0	4.8
	state	5.8	4.9	4.5	4.0
12	county	7.7	0.0	5.3	8.3
	state	5.4	5.0	4.3	4.0
Combined	county	5.2	0.0	1.5	3.6
	state	4.0	3.5	3.1	2.8

Table 45: Attacked to Harm

Grade	Group	2012-13	2013-14	2014-15	2015-16
6	county	13.1	0.0	17.4	0.0
	state	9.4	8.2	7.0	6.3
8	county	15.6	0.0	18.4	0.0
	state	13.2	11.5	9.2	8.9
10	county	36.5	0.0	8.3	9.5
	state	13.4	11.7	9.9	9.2
12	county	9.6	0.0	31.6	16.7
	state	10.9	9.6	8.3	7.4
Combined	county	19.0	0.0	17.3	7.3
	state	11.7	10.3	8.6	8.0

Table 46: Carried a Handgun

Grade	Group	2012-13	2013-14	2014-15	2015-16
6	county	9.8	0.0	11.4	0.0
	state	4.2	4.2	4.3	4.2
8	county	7.7	0.0	10.5	8.3
	state	4.7	4.7	5.1	4.9
10	county	12.7	0.0	5.6	4.8
	state	4.8	5.2	5.3	5.2
12	county	5.8	0.0	15.8	8.3
	state	4.8	4.8	5.3	5.2
Combined	county	9.1	0.0	10.2	7.0
	state	4.6	4.7	5.0	4.8

Table 47: Handgun to School

Grade	Group	2012-13	2013-14	2014-15	2015-16
6	county	0.0	0.0	0.0	0.0
	state	0.3	0.3	0.3	0.2
8	county	1.3	0.0	0.0	0.0
	state	0.6	0.4	0.4	0.3
10	county	0.0	0.0	0.0	0.0
	state	0.7	0.7	0.6	0.6
12	county	0.0	0.0	0.0	0.0
	state	0.9	0.8	0.9	0.9
Combined	county	0.4	0.0	0.0	0.0
	state	0.6	0.5	0.5	0.5

Table 48: Community Risk - High Community Disorganization

Grade	Group	2012-13	2013-14	2014-15	2015-16
6	county	56.1	0.0	38.1	0.0
	state	35.7	34.4	32.8	33.0
8	county	48.0	0.0	48.5	28.6
	state	31.8	29.7	29.3	28.7
10	county	59.3	0.0	65.5	55.6
	state	43.8	43.1	41.9	41.8
12	county	67.3	0.0	61.1	66.7
	state	42.6	41.8	41.2	41.4
Combined	county	57.6	0.0	50.8	48.8
	state	38.0	36.6	35.7	35.5

Table 49: Community Risk - Transitions and Mobility

Grade	Group	2012-13	2013-14	2014-15	2015-16
6	county	46.4	0.0	30.4	0.0
	state	46.9	46.9	46.9	48.0
8	county	46.3	0.0	53.3	42.9
	state	52.7	52.2	51.3	51.9
10	county	45.3	0.0	40.7	63.6
	state	58.7	57.1	57.6	56.4
12	county	37.5	0.0	33.3	55.6
	state	49.4	50.2	48.9	48.2
Combined	county	43.9	0.0	38.8	55.6
	state	52.0	51.7	51.3	51.3

Table 50: Community Risk - Laws and Norms Favorable to Drug Use

Grade	Group	2012-13	2013-14	2014-15	2015-16
6	county	28.1	0.0	40.9	0.0
	state	34.2	33.2	35.4	34.2
8	county	51.0	0.0	46.9	30.8
	state	29.4	27.7	28.9	27.1
10	county	62.3	0.0	34.5	41.2
	state	37.3	36.4	36.7	34.5
12	county	39.6	0.0	38.9	33.3
	state	29.5	29.0	29.1	27.6
Combined	county	44.9	0.0	40.7	35.9
	state	32.7	31.6	32.7	31.0

Table 51: Community Risk - Perceived Availability of Drugs

Grade	Group	2012-13	2013-14	2014-15	2015-16
6	county	16.7	0.0	20.0	0.0
	state	17.9	17.2	16.9	17.0
8	county	29.8	0.0	19.4	16.7
	state	23.0	20.5	20.4	19.2
10	county	35.8	0.0	21.4	5.9
	state	32.6	30.4	29.1	27.7
12	county	29.2	0.0	22.2	22.2
	state	37.7	36.5	34.2	34.0
Combined	county	27.7	0.0	20.5	13.2
	state	27.0	25.3	24.3	23.6

Table 52: Community Risk - Perceived Availability of Handguns

Grade	Group	2012-13	2013-14	2014-15	2015-16
6	county	27.8	0.0	22.2	0.0
	state	24.0	23.4	23.8	23.1
8	county	40.4	0.0	29.0	50.0
	state	35.3	35.6	35.6	34.4
10	county	32.1	0.0	24.1	11.8
	state	30.7	30.1	29.7	28.3
12	county	43.8	0.0	38.9	22.2
	state	35.6	35.3	34.2	32.7
Combined	county	35.6	0.0	26.8	26.3
	state	31.2	31.0	30.7	29.6

Table 53: Family Risk - Poor Family Management

Grade	Group	2012-13	2013-14	2014-15	2015-16
6	county	41.1	0.0	51.2	0.0
	state	33.5	32.3	33.6	33.0
8	county	41.5	0.0	34.5	22.2
	state	33.0	32.1	25.9	24.2
10	county	46.2	0.0	23.1	28.6
	state	32.5	32.7	24.5	22.4
12	county	33.3	0.0	41.2	11.1
	state	34.2	34.2	22.9	22.7
Combined	county	40.6	0.0	39.1	21.9
	state	33.2	32.7	27.0	25.7

Table 54: Family Risk - Family History of Antisocial Behavior

Grade	Group	2012-13	2013-14	2014-15	2015-16
6	county	33.3	0.0	31.1	0.0
	state	30.2	28.9	29.2	29.2
8	county	42.5	0.0	25.9	0.0
	state	33.5	31.2	31.2	29.8
10	county	50.0	0.0	32.0	45.5
	state	37.5	36.9	35.8	33.5
12	county	41.7	0.0	27.8	33.3
	state	35.9	34.1	33.7	31.9
Combined	county	41.5	0.0	29.6	30.8
	state	34.1	32.6	32.3	31.0

Table 55: Family Risk - Parental Attitudes Favorable to ATOD

Grade	Group	2012-13	2013-14	2014-15	2015-16
6	county	19.3	0.0	13.6	0.0
	state	9.0	8.6	8.9	9.0
8	county	31.0	0.0	13.3	33.3
	state	18.1	17.6	18.5	17.1
10	county	37.7	0.0	15.4	20.0
	state	29.8	29.7	29.6	27.3
12	county	35.4	0.0	33.3	33.3
	state	30.2	30.3	30.2	27.6
Combined	county	30.5	0.0	16.9	27.8
	state	21.0	20.7	20.9	19.5

Table 56: Family Risk - Parental Attitudes Favorable to ASB

Grade	Group	2012-13	2013-14	2014-15	2015-16
6	county	36.8	0.0	38.6	0.0
	state	28.0	27.0	26.7	27.7
8	county	45.2	0.0	33.3	33.3
	state	40.1	38.2	38.0	38.5
10	county	60.4	0.0	23.1	33.3
	state	43.4	43.0	42.9	41.3
12	county	45.8	0.0	44.4	33.3
	state	41.0	40.7	40.3	38.1
Combined	county	47.0	0.0	34.7	33.3
	state	37.8	36.9	36.6	36.3

Table 57: School Risk - Academic Failure

Grade	Group	2012-13	2013-14	2014-15	2015-16
6	county	50.9	0.0	44.2	0.0
	state	39.7	38.9	39.0	39.1
8	county	47.4	0.0	40.6	27.3
	state	40.8	39.9	40.4	38.9
10	county	37.1	0.0	42.9	60.0
	state	42.3	43.5	43.9	42.6
12	county	26.0	0.0	36.8	50.0
	state	36.7	36.7	37.1	36.7
Combined	county	41.2	0.0	41.9	44.4
	state	40.1	39.9	40.2	39.5

Table 58: School Risk - Low Commitment to School

Grade	Group	2012-13	2013-14	2014-15	2015-16
6	county	50.8	0.0	31.8	0.0
	state	38.9	39.7	36.8	36.8
8	county	35.9	0.0	60.5	41.7
	state	34.2	34.5	36.7	37.0
10	county	47.6	0.0	19.4	38.1
	state	38.5	41.9	43.1	43.3
12	county	28.0	0.0	52.6	41.7
	state	42.1	45.7	41.9	44.4
Combined	county	40.8	0.0	39.4	40.4
	state	38.1	39.8	39.3	39.9

Table 59: Peer Risk - Early Initiation of Drug Use

Grade	Group	2012-13	2013-14	2014-15	2015-16
6	county	15.0	0.0	24.4	0.0
	state	19.6	17.7	17.0	16.2
8	county	29.5	0.0	21.6	33.3
	state	21.4	18.7	18.7	16.7
10	county	36.5	0.0	8.6	14.3
	state	25.5	24.0	23.1	20.2
12	county	23.1	0.0	21.1	25.0
	state	26.3	24.7	23.8	21.7
Combined	county	26.5	0.0	19.1	24.6
	state	22.9	20.8	20.3	18.4

Table 60: Peer Risk - Early Initiation of ASB

Grade	Group	2012-13	2013-14	2014-15	2015-16
6	county	45.8	0.0	41.9	0.0
	state	22.8	22.0	16.7	16.2
8	county	46.2	0.0	41.7	21.7
	state	32.0	30.2	24.9	23.1
10	county	62.3	0.0	29.4	23.8
	state	35.6	34.2	27.5	26.1
12	county	48.0	0.0	68.4	58.3
	state	35.7	33.7	27.9	26.2
Combined	county	50.4	0.0	42.4	30.4
	state	31.0	29.6	23.8	22.5

Table 61: Peer Risk - Peer Favorable Attitudes to ASB

Grade	Group	2012-13	2013-14	2014-15	2015-16
6	county	52.5	0.0	26.7	0.0
	state	34.9	33.9	22.8	23.3
8	county	34.2	0.0	28.9	37.5
	state	30.1	27.8	26.8	25.4
10	county	57.1	0.0	30.3	47.6
	state	38.4	36.6	36.6	34.2
12	county	36.5	0.0	26.3	50.0
	state	35.5	34.8	35.7	34.6
Combined	county	44.7	0.0	28.1	43.9
	state	34.6	32.9	29.8	28.7

Table 62: Peer Risk - Peer Favorable Attitudes to Drug Use

Grade	Group	2012-13	2013-14	2014-15	2015-16
6	county	27.9	0.0	23.9	0.0
	state	15.3	14.5	13.1	12.6
8	county	29.1	0.0	15.8	25.0
	state	21.5	19.8	20.6	18.8
10	county	54.0	0.0	38.2	28.6
	state	33.1	32.5	32.6	30.3
12	county	29.4	0.0	15.8	50.0
	state	32.4	32.4	33.1	30.4
Combined	county	35.0	0.0	24.1	31.6
	state	24.7	23.8	23.8	22.1

Table 63: Peer Risk - Low Perceived Risk of Drug Use

Grade	Group	2012-13	2013-14	2014-15	2015-16
6	county	36.7	0.0	42.2	0.0
	state	36.9	36.7	36.9	35.5
8	county	51.5	0.0	63.2	54.5
	state	44.0	43.8	46.5	44.6
10	county	54.2	0.0	45.7	38.1
	state	47.0	47.5	50.3	48.1
12	county	46.2	0.0	44.4	72.7
	state	52.8	54.7	56.5	57.3
Combined	county	47.3	0.0	49.3	51.9
	state	44.5	44.8	46.6	45.3

Table 64: Peer Risk - Interaction with Antisocial Peers

Grade	Group	2012-13	2013-14	2014-15	2015-16
6	county	71.2	0.0	31.8	0.0
	state	38.1	36.0	33.2	32.4
8	county	66.7	0.0	63.9	41.7
	state	47.3	44.7	42.8	40.4
10	county	65.1	0.0	48.6	47.6
	state	48.1	46.5	44.1	41.4
12	county	61.5	0.0	73.7	58.3
	state	45.6	45.0	43.4	41.0
Combined	county	66.3	0.0	50.7	47.4
	state	44.6	42.8	40.5	38.6

Table 65: Peer Risk - Friends' Use of Drugs

Grade	Group	2012-13	2013-14	2014-15	2015-16
6	county	27.1	0.0	18.2	0.0
	state	17.1	16.1	14.9	14.6
8	county	38.5	0.0	32.4	33.3
	state	26.2	22.5	23.0	20.7
10	county	41.3	0.0	20.0	23.8
	state	29.7	28.0	26.8	23.6
12	county	33.3	0.0	21.1	25.0
	state	27.7	26.0	26.2	23.0
Combined	county	35.5	0.0	23.0	28.1
	state	24.8	22.8	22.2	20.2

Table 66: Peer Risk - Peer Rewards for Antisocial Involvement

Grade	Group	2012-13	2013-14	2014-15	2015-16
6	county	29.3	0.0	33.3	0.0
	state	24.1	22.9	24.4	24.5
8	county	43.6	0.0	35.1	44.0
	state	37.0	33.5	36.2	34.1
10	county	57.1	0.0	45.7	28.6
	state	42.9	41.7	42.4	39.8
12	county	52.9	0.0	36.8	54.5
	state	56.0	55.4	56.9	53.8
Combined	county	45.6	0.0	37.5	40.4
	state	38.6	36.8	38.3	36.6

Table 67: Peer Risk - Depressive Symptoms

Grade	Group	2012-13	2013-14	2014-15	2015-16
6	county	26.2	0.0	30.4	0.0
	state	35.3	34.5	35.5	34.6
8	county	32.9	0.0	47.4	43.5
	state	42.1	41.1	42.5	42.1
10	county	48.4	0.0	47.1	47.6
	state	43.3	46.0	48.1	47.1
12	county	29.4	0.0	38.9	50.0
	state	37.7	40.1	42.6	44.5
Combined	county	34.4	0.0	40.4	46.4
	state	39.7	40.3	41.9	41.7

Table 68: Peer Risk - Gang Involvement

Grade	Group	2012-13	2013-14	2014-15	2015-16
6	county	39.0	0.0	18.2	0.0
	state	16.4	16.0	15.1	14.8
8	county	24.7	0.0	18.9	0.0
	state	15.3	13.3	13.0	11.7
10	county	36.5	0.0	20.6	28.6
	state	23.6	21.9	20.1	19.6
12	county	30.8	0.0	47.4	8.3
	state	23.5	23.0	21.6	21.6
Combined	county	32.3	0.0	23.1	12.5
	state	19.3	18.0	16.9	16.4

Table 69: School Protective - School Opportunities for PSI

Grade	Group	2012-13	2013-14	2014-15	2015-16
6	county	38.7	0.0	52.2	0.0
	state	50.6	52.7	54.0	54.5
8	county	65.8	0.0	45.9	73.1
	state	65.5	67.4	67.4	70.5
10	county	50.0	0.0	76.3	61.9
	state	65.0	65.2	64.3	66.9
12	county	70.6	0.0	63.2	66.7
	state	66.3	65.7	65.4	65.8
Combined	county	56.3	0.0	58.6	67.8
	state	61.4	62.5	62.5	64.3

Table 70: School Protective - School Rewards for PSI

Grade	Group	2012-13	2013-14	2014-15	2015-16
6	county	61.3	0.0	71.1	0.0
	state	57.5	56.4	54.6	54.7
8	county	53.2	0.0	32.4	50.0
	state	55.5	55.3	53.7	53.6
10	county	47.6	0.0	65.8	61.9
	state	62.9	62.5	60.9	61.5
12	county	47.1	0.0	42.1	66.7
	state	49.6	48.4	47.5	46.2
Combined	county	52.5	0.0	55.4	57.6
	state	56.8	56.0	54.6	54.5

Table 71: Peer Protective - Religiosity

Grade	Group	2012-13	2013-14	2014-15	2015-16
6	county	66.7	0.0	80.4	0.0
	state	62.3	61.5	61.9	63.4
8	county	67.6	0.0	57.9	68.2
	state	67.1	66.9	67.1	66.9
10	county	58.1	0.0	71.4	66.7
	state	65.2	63.9	64.1	64.1
12	county	92.2	0.0	78.9	83.3
	state	85.2	84.4	83.7	82.0
Combined	county	70.0	0.0	71.7	70.9
	state	68.8	68.0	68.1	68.0

Table 72: Sources of Alcohol

		Bought It Myself WITH a Fake ID	Bought It Myself WITHOUT a Fake ID	Someone I Know Age 21 or Older	Someone I Know Under Age 21	My Brother or Sister	Home WITH Parents' Permission	Home WITHOUT Parents' Permission	Another Relative	A Stranger Bought It For Me	Took It From a Store or Shop	Other
8	county	0.0	0.0	42.9	0.0	0.0	28.6	14.3	0.0	0.0	0.0	14.3
	state	0.9	0.5	19.0	11.0	4.9	17.2	16.0	8.4	0.8	0.4	20.8
10	county	0.0	0.0	36.4	9.1	0.0	0.0	0.0	9.1	0.0	0.0	45.5
	state	0.8	1.1	28.8	16.7	3.6	14.1	10.0	5.9	1.5	0.4	17.2
12	county	0.0	0.0	60.0	0.0	0.0	0.0	0.0	20.0	0.0	0.0	20.0
	state	1.3	2.6	42.9	15.5	2.8	10.3	3.2	4.1	1.7	0.4	15.2
Combined	county	0.0	0.0	43.5	4.3	0.0	8.7	4.3	8.7	0.0	0.0	30.4
	state	1.0	1.6	32.5	15.0	3.6	13.2	8.5	5.7	1.5	0.4	17.1

Table 73: Location of Alcohol Use

		My Home	Someone Else's Home	Open Area Like a Park, etc.	Sporting Event or Concert	Restaurant, Bar, or a Nightclub	Empty Building or Site	Hotel/Motel	In a Car	At School
8	county	37.5	50.0	12.5	0.0	0.0	0.0	0.0	0.0	0.0
	state	43.5	38.4	9.4	1.4	1.6	1.0	1.2	1.7	1.8
10	county	50.0	33.3	16.7	0.0	0.0	0.0	0.0	0.0	0.0
	state	33.4	51.1	8.8	1.0	1.2	0.5	1.2	1.3	1.4
12	county	0.0	100.0	0.0	0.0	0.0	0.0	0.0	0.0	0.0
	state	26.5	57.7	8.5	1.0	1.9	0.4	1.6	1.5	0.9
Combined	county	33.3	55.6	11.1	0.0	0.0	0.0	0.0	0.0	0.0
	state	32.7	51.2	8.8	1.1	1.5	0.6	1.4	1.5	1.3

Table 74: I feel safe at my school.

		NO!	no	yes	YES!
8	county	15.4	15.4	57.7	11.5
	state	6.0	12.7	51.4	29.9
10	county	9.5	14.3	52.4	23.8
	state	6.6	15.2	57.2	21.0
12	county	16.7	0.0	50.0	33.3
	state	6.5	13.3	57.9	22.3
Combined	county	13.6	11.9	54.2	20.3
	state	6.3	13.7	55.1	24.9

Table 75: How often have you taken a handgun to school.

		Never	1-2 times	3-5 times	6-9 times	10-19 times	20-29 times	30-39 times	40+ times
8	county	100.0	0.0	0.0	0.0	0.0	0.0	0.0	0.0
	state	99.7	0.2	0.0	0.0	0.0	0.0	0.0	0.0
10	county	100.0	0.0	0.0	0.0	0.0	0.0	0.0	0.0
	state	99.4	0.2	0.1	0.0	0.0	0.1	0.0	0.1
12	county	100.0	0.0	0.0	0.0	0.0	0.0	0.0	0.0
	state	99.1	0.3	0.1	0.1	0.1	0.0	0.0	0.2
Combined	county	100.0	0.0	0.0	0.0	0.0	0.0	0.0	0.0
	state	99.4	0.2	0.1	0.0	0.0	0.0	0.0	0.1

Table 76: How wrong do you think it is for someone your age to take a gun to school.

		Very Wrong	Wrong	A Little Bit Wrong	Not Wrong at All
8	county	91.7	0.0	4.2	4.2
	state	86.8	9.8	2.5	0.9
10	county	76.2	19.0	4.8	0.0
	state	86.4	9.5	2.9	1.2
12	county	75.0	16.7	8.3	0.0
	state	88.0	8.1	2.5	1.4
Combined	county	82.5	10.5	5.3	1.8
	state	87.0	9.3	2.6	1.1

Table 77: Have any of your brothers/sisters ever taken a gun to school.

		No	Yes	I don't have any brothers or sisters
8	county	100.0	0.0	0.0
	state	95.0	1.3	3.7
10	county	100.0	0.0	0.0
	state	93.6	1.7	4.8
12	county	88.9	0.0	11.1
	state	93.0	1.9	5.1
Combined	county	96.7	0.0	3.3
	state	94.0	1.6	4.4

5 AGE OF FIRST USE

The No Child Left Behind Profile looks specifically at student responses to the questions "How old were you when you first ...". The questions cover both first incidences of drug use (marijuana, cigarettes, alcohol, and regular use of alcohol) and first incidences of antisocial behaviors (suspension, arrest, carrying a gun, attacking someone and belonging to a gang). Possible responses to these questions range from age 10 to age 17 or the student can respond to the question with *Never*. The average age figures are based only on those students who responded to the question with an answer other than *Never*.

Table 78: Avg Age of First Marijuana

Grade	Group	2012-13	2013-14	2014-15	2015-16
6	county	0.0	0.0	12.0	0.0
	state	10.9	10.9	11.0	11.0
8	county	11.8	0.0	11.0	0.0
	state	12.1	12.2	12.2	12.2
10	county	13.7	0.0	14.8	12.7
	state	13.4	13.5	13.5	13.5
12	county	14.4	0.0	15.4	14.9
	state	14.7	14.6	14.7	14.7
Combined	county	13.5	0.0	14.5	14.2
	state	13.7	13.7	13.7	13.7

Table 79: Avg Age of First Cigarettes

Grade	Group	2012-13	2013-14	2014-15	2015-16
6	county	10.4	0.0	10.2	0.0
	state	10.5	10.4	10.4	10.5
8	county	11.5	0.0	11.1	12.6
	state	11.3	11.4	11.4	11.4
10	county	12.3	0.0	12.8	13.2
	state	12.5	12.5	12.5	12.6
12	county	13.9	0.0	14.1	14.4
	state	13.6	13.6	13.7	13.7
Combined	county	12.4	0.0	12.1	13.5
	state	12.4	12.4	12.5	12.5

Table 80: Avg Age of First Alcohol

Grade	Group	2012-13	2013-14	2014-15	2015-16
6	county	10.4	0.0	10.2	0.0
	state	10.5	10.4	10.5	10.4
8	county	11.8	0.0	11.1	12.2
	state	11.6	11.6	11.7	11.7
10	county	12.5	0.0	13.7	13.4
	state	13.0	13.0	13.1	13.1
12	county	13.9	0.0	13.0	15.0
	state	14.3	14.3	14.3	14.4
Combined	county	12.6	0.0	12.1	13.5
	state	12.8	12.8	12.9	12.9

Table 81: Avg Age of First Regular Alcohol Use

Grade	Group	2012-13	2013-14	2014-15	2015-16
6	county	11.5	0.0	0.0	0.0
	state	11.0	10.8	10.8	11.0
8	county	12.7	0.0	10.0	13.0
	state	12.3	12.3	12.3	12.3
10	county	12.8	0.0	15.0	14.0
	state	13.9	13.9	14.0	14.1
12	county	13.9	0.0	13.3	14.7
	state	15.4	15.4	15.4	15.4
Combined	county	12.9	0.0	13.0	14.1
	state	14.2	14.2	14.3	14.4

Table 82: Avg Age of First E-Cigarettes, E-Cigars or E-Hookahs

Grade	Group	2012-13	2013-14	2014-15	2015-16
6	county	0.0	0.0	0.0	0.0
	state	0.0	0.0	10.8	10.8
8	county	0.0	0.0	12.0	12.0
	state	0.0	0.0	12.6	12.4
10	county	0.0	0.0	14.7	13.1
	state	0.0	0.0	14.4	14.1
12	county	0.0	0.0	14.5	15.8
	state	0.0	0.0	16.1	15.6
Combined	county	0.0	0.0	13.8	13.5
	state	0.0	0.0	14.5	14.2

Table 83: Avg Age of First Prescription Drugs

Grade	Group	2012-13	2013-14	2014-15	2015-16
6	county	0.0	0.0	10.5	0.0
	state	0.0	0.0	10.6	10.5
8	county	0.0	0.0	0.0	0.0
	state	0.0	0.0	11.9	11.9
10	county	0.0	0.0	14.3	10.0
	state	0.0	0.0	13.5	13.6
12	county	0.0	0.0	15.5	15.0
	state	0.0	0.0	14.8	14.7
Combined	county	0.0	0.0	12.9	13.3
	state	0.0	0.0	13.6	13.5

Table 84: Avg Age of First School Suspension

Grade	Group	2012-13	2013-14	2014-15	2015-16
6	county	10.4	0.0	10.0	0.0
	state	10.5	10.4	10.4	10.4
8	county	11.3	0.0	11.5	11.5
	state	11.4	11.4	11.4	11.4
10	county	11.8	0.0	12.9	13.0
	state	12.3	12.2	12.2	12.2
12	county	12.9	0.0	11.6	13.5
	state	13.1	13.0	13.0	12.9
Combined	county	11.6	0.0	11.5	12.8
	state	11.9	11.8	11.8	11.8

Table 85: Avg Age of First Been Arrested

Grade	Group	2012-13	2013-14	2014-15	2015-16
6	county	10.0	0.0	0.0	0.0
	state	10.8	10.7	10.7	10.7
8	county	11.8	0.0	11.0	0.0
	state	12.2	12.1	12.2	12.2
10	county	12.8	0.0	0.0	16.0
	state	13.5	13.5	13.5	13.5
12	county	14.0	0.0	13.5	16.0
	state	14.7	14.8	14.6	14.7
Combined	county	12.8	0.0	12.7	16.0
	state	13.4	13.4	13.3	13.3

Table 86: Avg Age of First Carried a Gun

Grade	Group	2012-13	2013-14	2014-15	2015-16
6	county	11.4	0.0	10.4	0.0
	state	10.7	10.7	10.7	10.7
8	county	12.0	0.0	10.0	13.0
	state	11.7	11.6	11.6	11.6
10	county	12.6	0.0	15.5	0.0
	state	12.7	12.6	12.6	12.6
12	county	13.5	0.0	14.2	16.0
	state	13.9	13.6	13.6	13.6
Combined	county	12.5	0.0	11.7	14.0
	state	12.2	12.1	12.1	12.1

Table 87: Avg Age of First Belonged to a Gang

Grade	Group	2012-13	2013-14	2014-15	2015-16
6	county	10.3	0.0	0.0	0.0
	state	10.8	10.8	10.8	10.8
8	county	11.4	0.0	10.0	0.0
	state	11.9	12.0	12.0	12.0
10	county	11.8	0.0	16.0	16.0
	state	12.7	12.7	12.5	12.8
12	county	12.2	0.0	11.0	0.0
	state	13.0	13.0	13.2	13.2
Combined	county	11.6	0.0	11.8	16.0
	state	12.1	12.2	12.1	12.2

Avg. Age of First Use - Grade 8 Lafayette County

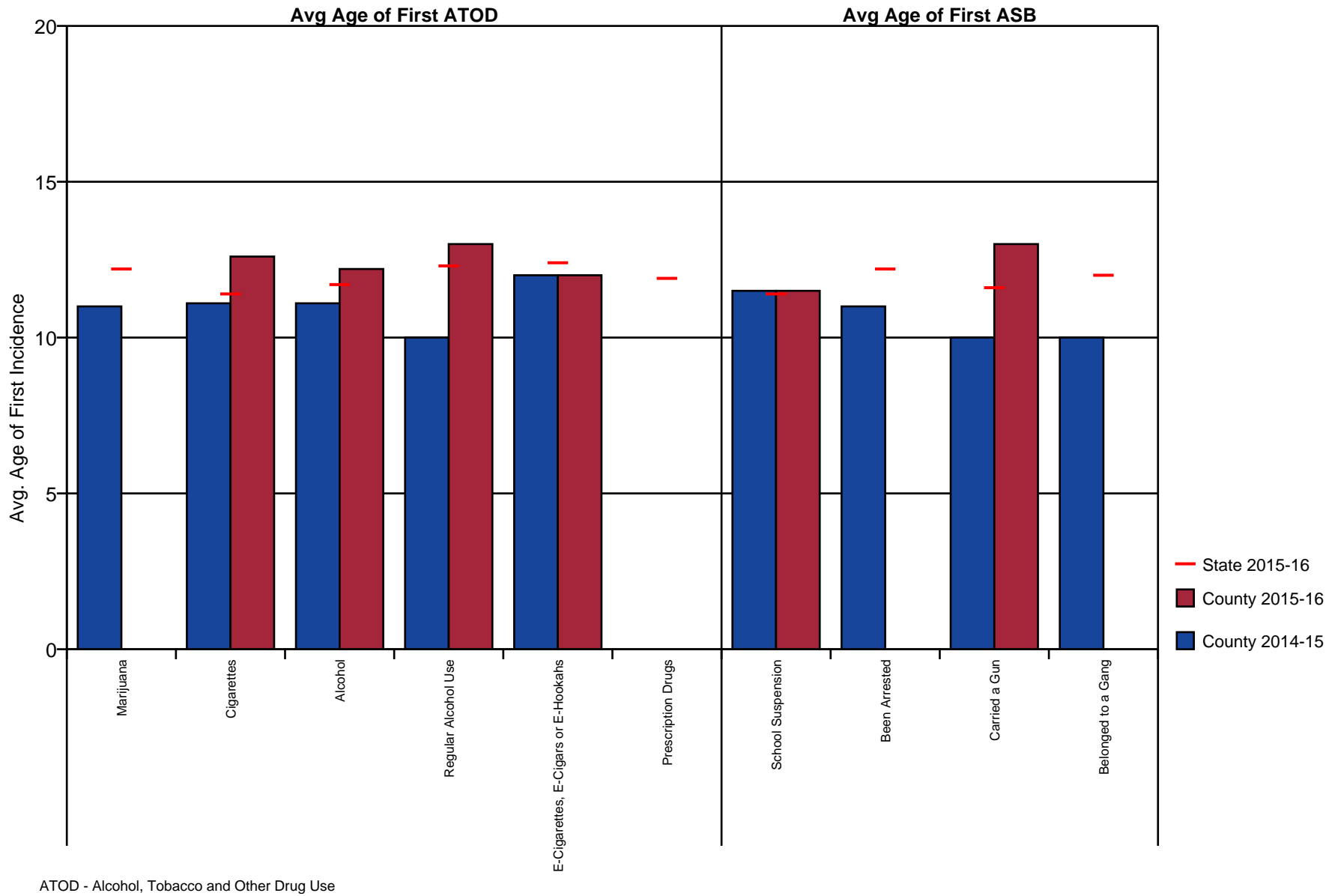
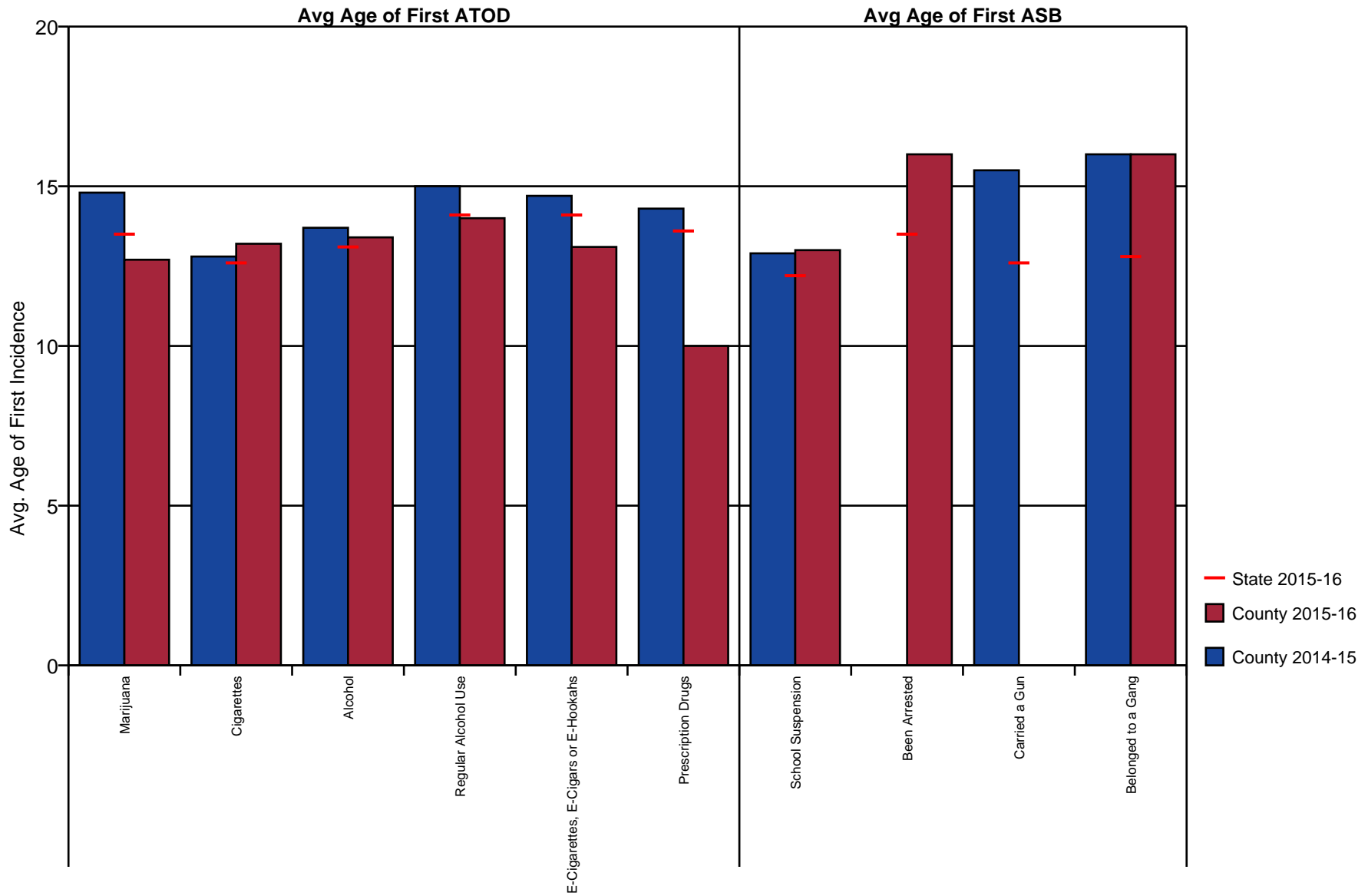


Figure 19: Avg. Age of First Use - Grade 8

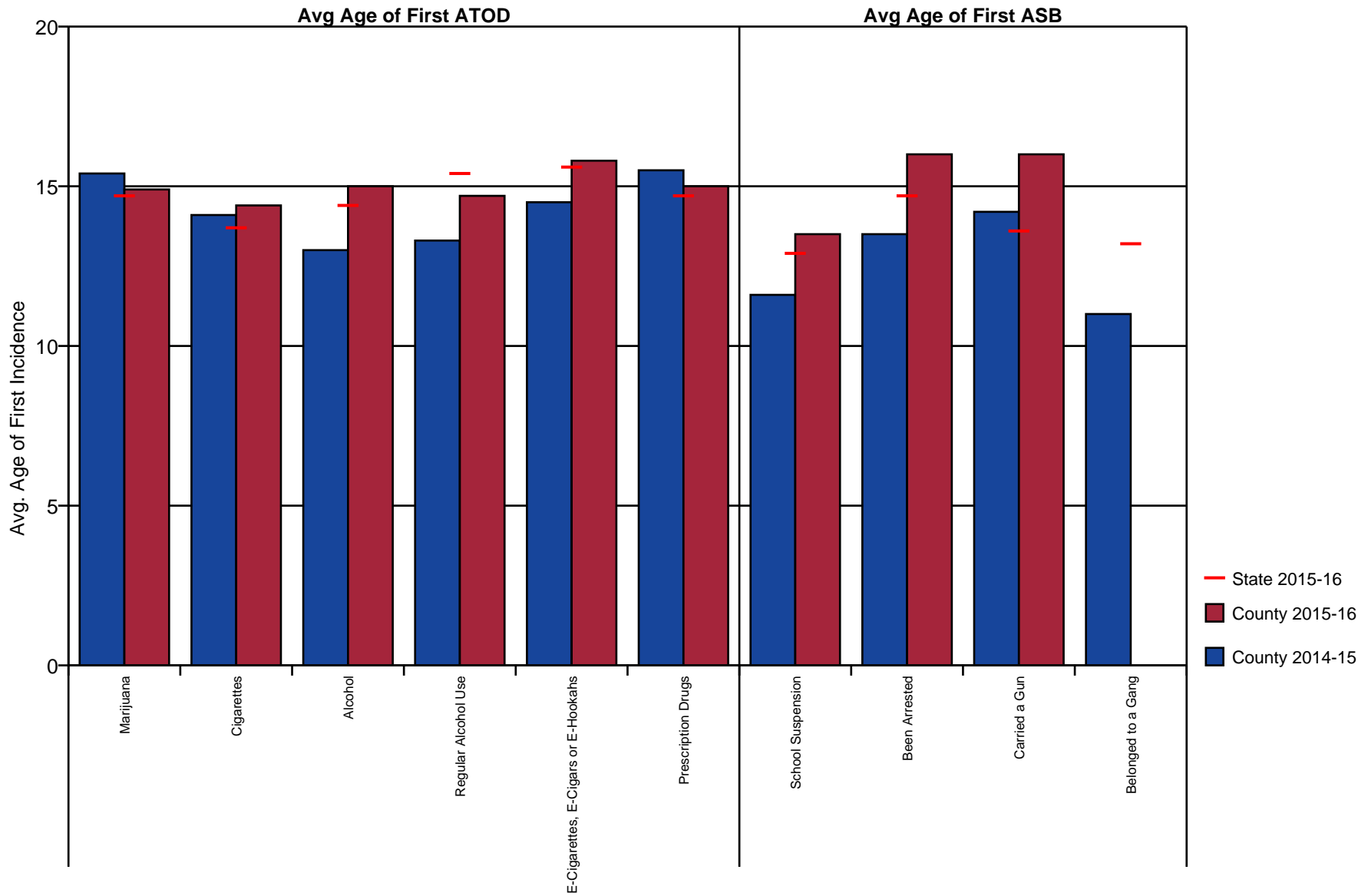
Avg. Age of First Use - Grade 10
Lafayette County



ATOD - Alcohol, Tobacco and Other Drug Use

Figure 20: Avg. Age of First Use - Grade 10

Avg. Age of First Use - Grade 12 Lafayette County



ATOD - Alcohol, Tobacco and Other Drug Use

Figure 21: Avg. Age of First Use - Grade 12

6 STUDENT TOBACCO USE, EXPERIENCES AND PREVENTION SERVICES

Tobacco use is the leading preventable cause of death in the United States. The 2014 survey added five new tobacco-related questions (Q49-Q53) to the already existing items (Q45-Q48) to explore this topic.

Arkansas youth typically have higher rates of tobacco use, including both cigarettes and smokeless tobacco, than the national average. Higher tobacco prevalence rates are common across the Southeast United States. This is due to a variety of cultural and economic factors that have traditionally supported greater tobacco use. The following table shows the results of the lifetime and past 30 day use of cigarettes and chewing tobacco.

Table 88: Cigarettes - Lifetime Use

Grade	Group	2012-13	2013-14	2014-15	2015-16
6	county	12.9	0.0	6.5	0.0
	state	7.9	7.0	6.3	5.7
8	county	25.0	0.0	23.7	21.7
	state	20.6	18.0	18.0	15.5
10	county	45.0	0.0	20.0	38.1
	state	32.9	30.6	29.5	26.3
12	county	46.0	0.0	33.3	54.5
	state	42.1	39.6	39.4	35.3
Combined	county	31.2	0.0	18.2	34.5
	state	24.2	22.2	21.5	19.1

Table 89: Chewing Tobacco - Lifetime Use

Grade	Group	2012-13	2013-14	2014-15	2015-16
6	county	9.7	0.0	8.7	0.0
	state	5.3	4.7	4.7	4.1
8	county	10.0	0.0	23.7	8.7
	state	12.1	11.1	11.3	9.9
10	county	18.3	0.0	11.4	33.3
	state	19.5	18.8	18.4	16.9
12	county	31.4	0.0	5.6	18.2
	state	23.6	22.2	22.4	19.9
Combined	county	16.5	0.0	13.1	20.0
	state	14.2	13.3	13.2	11.9

Table 90: Cigarettes - Past 30 Day Use

Grade	Group	2012-13	2013-14	2014-15	2015-16
6	county	3.2	0.0	0.0	0.0
	state	1.4	1.3	1.1	0.8
8	county	8.8	0.0	8.1	8.7
	state	5.2	4.5	4.6	3.6
10	county	23.3	0.0	5.7	14.3
	state	12.5	10.9	10.3	8.7
12	county	24.0	0.0	22.2	45.5
	state	18.9	17.5	16.7	14.2
Combined	county	14.2	0.0	6.6	18.2
	state	8.6	7.6	7.3	6.0

Table 91: Chewing Tobacco - Past 30 Day Use

Grade	Group	2012-13	2013-14	2014-15	2015-16
6	county	3.2	0.0	0.0	0.0
	state	1.4	1.3	1.2	1.1
8	county	5.8	0.0	5.3	4.3
	state	4.7	4.3	4.2	3.4
10	county	10.0	0.0	5.7	23.8
	state	9.2	8.4	8.5	7.2
12	county	21.6	0.0	0.0	9.1
	state	11.2	10.4	10.4	9.1
Combined	county	9.5	0.0	2.9	12.7
	state	6.1	5.6	5.6	4.8

The new tobacco-related items, Q49, explores rules regarding smoking at the student's home or car. Q50-Q51 explores the use of electronic tobacco products and Q52-Q53 assess the availability of tobacco prevention programming within school and community settings. The following tables show the results for these five items.

Table 92: Which statement best describes rules about smoking inside your home or your family cars?

		Smoking is not allowed anywhere inside your home or cars	Smoking is allowed in some places and at some times or in some cars	Smoking is allowed anywhere inside the home or cars	There are no rules about smoking inside the home or cars	I don't know
8	county	81.0	4.8	4.8	9.5	0.0
	state	67.6	10.3	3.5	4.4	14.2
10	county	57.1	14.3	4.8	9.5	14.3
	state	69.2	10.6	3.6	5.4	11.2
12	county	54.5	0.0	0.0	36.4	9.1
	state	70.7	10.7	3.7	6.3	8.7
Combined	county	66.0	7.5	3.8	15.1	7.5
	state	68.9	10.5	3.6	5.2	11.8

Table 93: Have you ever used e-cigarettes, e-cigars, or e-hookahs?

		Never	Once or Twice	Once in a while but not regularly	Regularly in the past	Regularly now
8	county	86.4	9.1	0.0	4.5	0.0
	state	85.7	8.4	3.5	1.3	1.1
10	county	57.1	19.0	9.5	14.3	0.0
	state	71.4	13.3	8.2	4.1	3.1
12	county	63.6	18.2	9.1	0.0	9.1
	state	62.9	15.7	11.6	5.2	4.5
Combined	county	70.4	14.8	5.6	7.4	1.9
	state	75.0	11.9	7.2	3.2	2.7

Table 94: How frequently have you used e-cigarettes, e-cigars, or e-hookahs?

		Not at all	Less than 10 puffs per day	10 to 50 puffs per day	About one- half cartomiser per day	About one cartomiser per day	About one and one- half cartomisers per day	Two cartomisers or more per day
8	county	95.0	5.0	0.0	0.0	0.0	0.0	0.0
	state	93.6	4.3	1.3	0.4	0.2	0.1	0.2
10	county	65.0	15.0	15.0	5.0	0.0	0.0	0.0
	state	84.9	9.3	3.4	1.0	0.6	0.3	0.5
12	county	63.6	27.3	0.0	0.0	9.1	0.0	0.0
	state	79.8	11.9	4.6	1.6	1.0	0.5	0.7
Combined	county	76.5	13.7	5.9	2.0	2.0	0.0	0.0
	state	87.1	7.9	2.9	0.9	0.5	0.3	0.4

Table 95: During this school year, were you taught in any of your classes about the dangers of tobacco use?

		Never	Rarely	Sometimes	Often	Almost always
8	county	15.0	15.0	25.0	30.0	15.0
	state	22.3	17.1	24.7	21.1	14.8
10	county	25.0	20.0	35.0	15.0	5.0
	state	36.6	21.2	22.1	12.9	7.2
12	county	27.3	18.2	18.2	18.2	18.2
	state	46.3	20.2	19.0	9.6	4.9
Combined	county	21.6	17.6	27.5	21.6	11.8
	state	33.3	19.3	22.4	15.3	9.6

Table 96: During the past 12 months, have you participated in any community activities to discourage people your age from using cigarettes, chewing tobacco, snuff, dip or cigars, e-cigarettes, e-cigars, or e-hookahs?

		Never	Rarely	Sometimes	Often	Almost always
8	county	50.0	20.0	25.0	0.0	5.0
	state	62.8	15.5	11.5	5.9	4.2
10	county	60.0	15.0	15.0	5.0	5.0
	state	70.6	13.5	9.5	4.0	2.4
12	county	54.5	18.2	9.1	9.1	9.1
	state	74.9	11.4	8.0	3.5	2.2
Combined	county	54.9	17.6	17.6	3.9	5.9
	state	68.6	13.8	9.9	4.6	3.1

7 DRUG-FREE COMMUNITIES SUPPORT PROGRAM CORE MEASURES

The Drug-Free Communities Support Program, administered by the Center for Substance Abuse Prevention, requests specific data which is typically referred to as the Core Measures. The drug categories measured are cigarettes/tobacco, alcohol, marijuana and prescription drugs and the table is broken down by grade level. For each drug, and at each grade level, the percentage of students who responded positively to the question and the number of students who responded to the question are reported.

Past 30-Day Use The question *On how many occasions (if any) have you ... in the past 30 days?* is used to measure this statistic by reporting the percentage of students who report any use in the past 30 days.

Perception of Risk The question *How much do you think people risk harming themselves (physically or in other ways) if they ...?* is used to measure this statistic by reporting the percentage of students who report that using the drug is a *Moderate Risk* or a *Great Risk* to their health.

Perception of Parental Disapproval The question *How wrong do your parents feel it would be for you to ...?* is used to measure this statistic by reporting the percentage of students who report that parents would feel it is *Wrong* or *Very Wrong* to use tobacco, alcohol and marijuana.

Perception of Friends Disapproval The question *How wrong do your friends feel it would be for you to ...?* is used to measure this statistic by reporting the percentage of students who report that friends would feel it is *Wrong* or *Very Wrong* to use tobacco, alcohol and marijuana.

Table 97: Core Measure by Grade for Past 30 Day Use

Grade	Cigarettes		Alcohol		Marijuana		Presc Drugs	
	pct	n	pct	n	pct	n	pct	n
Grade 8	8.7	23	11.1	18	0.0	18	0.0	19
Grade 10	14.3	21	20.0	20	5.0	20	0.0	19
Grade 12	45.5	11	30.0	10	20.0	10	0.0	10
Combined	18.2	55	18.8	48	6.2	48	0.0	48

Table 98: Core Measure by Grade for Perception of Risk

Grade	Cigarettes		Alcohol		Marijuana		Presc Drugs	
	pct	n	pct	n	pct	n	pct	n
Grade 8	77.3	22	50.0	22	61.9	21	77.3	22
Grade 10	66.7	21	81.0	21	57.1	21	85.7	21
Grade 12	63.6	11	54.5	11	27.3	11	54.5	11
Combined	70.4	54	63.0	54	52.8	53	75.9	54

Table 99: Core Measure by Grade for Parental Disapproval

Grade	Tobacco		Alcohol		Marijuana		Presc Drugs	
	pct	n	pct	n	pct	n	pct	n
Grade 8	91.7	12	75.0	12	91.7	12	91.7	12
Grade 10	93.3	15	100.0	15	100.0	15	100.0	15
Grade 12	66.7	9	88.9	9	66.7	9	100.0	9
Combined	86.1	36	88.9	36	88.9	36	97.2	36

Table 100: Core Measure by Grade for Friends Disapproval

Grade	Tobacco		Alcohol		Marijuana		Presc Drugs	
	pct	n	pct	n	pct	n	pct	n
Grade 8	84.6	13	64.3	14	92.3	13	92.3	13
Grade 10	63.2	19	52.6	19	68.4	19	84.2	19
Grade 12	44.4	9	44.4	9	55.6	9	66.7	9
Combined	65.9	41	54.8	42	73.2	41	82.9	41

Table 101: Core Measure by Sex for Past 30 Day Use

Sex	Cigarettes		Alcohol		Marijuana		Presc Drugs	
	pct	n	pct	n	pct	n	pct	n
Male	17.9	28	16.7	24	4.2	24	0.0	24
Female	18.5	27	20.8	24	8.3	24	0.0	24
Combined	18.2	55	18.8	48	6.2	48	0.0	48

Table 102: Core Measure by Sex for Perception of Risk

Sex	Cigarettes		Alcohol		Marijuana		Presc Drugs	
	pct	n	pct	n	pct	n	pct	n
Male	63.0	27	48.1	27	53.8	26	70.4	27
Female	77.8	27	77.8	27	51.9	27	81.5	27
Combined	70.4	54	63.0	54	52.8	53	75.9	54

Table 103: Core Measure by Sex for Parental Disapproval

Sex	Tobacco		Alcohol		Marijuana		Presc Drugs	
	pct	n	pct	n	pct	n	pct	n
Male	94.7	19	94.7	19	100.0	19	100.0	19
Female	76.5	17	82.4	17	76.5	17	94.1	17
Combined	86.1	36	88.9	36	88.9	36	97.2	36

Table 104: Core Measure by Sex for Friends Disapproval

Sex	Tobacco		Alcohol		Marijuana		Presc Drugs	
	pct	n	pct	n	pct	n	pct	n
Male	68.2	22	59.1	22	77.3	22	95.5	22
Female	63.2	19	50.0	20	68.4	19	68.4	19
Combined	65.9	41	54.8	42	73.2	41	82.9	41

8 PREVENTION RESOURCES

8.1 Regional Prevention Providers (RPP)

Region 1

Operated by Preferred Family Healthcare dba Decision Pt (RPP)

(Counties: Benton, Carroll, Madison, Washington)

Ms. Laurie Reh, Representative
614 East Emma Avenue, Suite M426
Springdale, AR 72764
(479) 927-2655
Fax: (479) 927-2752
E-MAIL: lreh@decision-point.org

Region 2

Operated by Preferred Family Healthcare dba Health Resources of Arkansas (RPP)

(Counties: Izard, Newton, Searcy, Stone, Van Buren)

Ms. Margaret Morrison, Representative

<u>Mailing Address</u>	<u>Physical Address</u>
P O Box 492	106 Mountain Place Sq.
Mountain View, AR 72560	Mountain View, AR 72560

(870) 269-6770
Fax: (870) 269-2196
E-MAIL: mmorrison@hra-ao.org

(Counties: Cleburne, Independence, Jackson, White, Woodruff)

Ms. Marcy Wright, Representative
1800 Myers Street
Batesville, AR 72501
(870) 793-8925 ext 1009
Fax: (870) 793-8929
EMAIL: mwright@hra-ao.org

(Counties: Baxter, Boone, Fulton, Marion, Sharp)

Ms. Tarrah Powell, Representative

<u>Mailing Address</u>	<u>Physical Address</u>
P O Box 2698	8 Medical Plaza
Mountain Home, AR 72654	Mountain Home, AR 72654

(870) 424-0699
Fax: (870) 269-2196
EMAIL: tpowell@hra-ao.org

Region 3

Operated by Crowley's Ridge Development Council (RPP)

(Counties: Clay, Craighead, Lawrence, Mississippi, Randolph)

Ms. Dorothy "Dot" Newsom, Representative

<u>Mailing Address</u>	<u>Physical Address</u>
P O Box 16720	2401 Fox Meadow Lane
Jonesboro, AR 72403	Jonesboro, AR 72404

(870) 933-0033
Fax: (870) 933-0048 ext. 148
EMAIL: dnewsom@crdcnea.com

(Counties: Crittenden, Cross, Greene, Poinsett)

Ms. Sandra Drennin, Representative
EMAIL: sdrennin@crdcnea.com

(Counties: Lee, Monroe, Phillips, St. Francis)

Mr. Kendon Gray, Representative
593 Highway 243
Marianna Civic Center
Marianna, AR 72360
(870) 298-2250
Fax: (870) 298-2249
EMAIL: kendongray@yahoo.com

Region 4

Operated by Harbor House, Inc. (RPP)

(Counties: Crawford, Franklin, Logan, Polk, Scott, Sebastian)

Ms. Tabitha Fondrem, Representative

<u>Mailing Address</u>	<u>Physical Address</u>
P O Box 4207	3900 Armour Avenue
Fort Smith, AR 72914	Fort Smith, AR 72904

(479) 785-4083 ext. 212 (Tabitha)
Fax: (479) 783-1914
EMAIL: tfondren@recoveryhhi.org

Region 5

Operated by Community Service, Inc. (RPP)

(Counties: Conway, Faulkner, Perry)

Ms. Brittany Jackson-Lea, Representative

Mailing Address

PO Box 679

Morrilton, AR 72110

(501) 354-4589

Fax: (501) 354-5410

E-MAIL: blea@communityserviceinc.com

Physical Address

100 South Cherokee

Morrilton, AR 72210

(Counties: Clark, Garland, Hot Springs, Montgomery, Pike)

Darla Kelsay, Representative

1401 Malvern Avenue, Suite 200C

Hot Springs, AR 71901 (Rix Building)

(501) 624-5636

EMAIL: dkelsay@communityserviceinc.com

(Counties: Johnson, Pope, Yell)

Amy Mellick, Representative

818 N. Creek Drive

Conway, AR 72032

(501) 327-9788

EMAIL: amellick@communityserviceinc.com

Region 6

Operated by Phoenix Youth and Family Services (RPP)

(Counties: Ashley, Bradley, Chicot, Desha, Drew)

Ms. Christie Lindsey, Representative

Mailing Address

P O Box 654

Crossett, AR 71635

(870) 364-1676

Fax: (870) 364-1779

E-MAIL: clindsey@phoenixyouth.com

Physical Address

310 North Alabama St.

Crossett, AR 71635

(Counties: Arkansas, Cleveland, Grant, Jefferson, Lincoln)

Mr. Hank Wilkins, V, Representative

717 West 2nd Avenue

Pine Bluff, AR 71601

(870) 835-0038

Fax: (870) 536-6327

E-MAIL: hwilkins@phoenixyouth.com

Region 7

Operated by University of Arkansas for Medical Sciences-South Arkansas (RPP)

(Counties: Calhoun, Columbia, Dallas, Union)

Wyteshia Howell, Representative

UAMS South

1617 North Washington

Magnolia, AR 71753

(870) 562-2563

Fax: (870) 562-2568

EMAIL: WLHowell@uams.edu

(Counties: Hempstead, Lafayette, Nevada, Ouachita)

Tia Blakely, Representative

UAMS South

1617 North Washington

Magnolia, AR 71753

(870) 562-2563 ext. 1011

EMAIL: TNBlakely@uams.edu

(Counties: Howard, Little River, Miller, Sevier)

Pam Culver, Representative

UAMS South

300 East 6th Street

Texarkana, AR 71854

(870) 773-6272

Fax: (870) 773-6460

EMAIL: pjculver@uams.edu

Region 8

Operated by Family Service Agency, Inc.

(Counties: Lonoke, Prairie, Pulaski, Saline)

Hayse Miller, Representative

628 West Broadway Street, Ste 300

North Little Rock, AR 72114

(501) 372-4242 ext. 752 & 753

Fax: (501) 372-4758

EMAIL: [hmiller@fsainc.org](mailto:hmillers@fsainc.org)

8.2 State and National Contacts

**Arkansas Department of Human Services
Division of Behavioral Health Services
Prevention Services**

<u>Mailing Address</u>	<u>Physical Address</u>
305 South Palm St Little Rock, AR 72205 Telephone: (501) 686-9982 FAX: (501) 686-9396 Website: http://www.arkansas.gov/dhhs/dmhs	4800 W. 7th Street Little Rock, AR 72205

Ms. Sharron Mims
DHS Program Manager
EMAIL: sharron.mims@dhs.arkansas.gov

Tenesha Barnes
Early Intervention and Prevention Manager
EMAIL: tenesha.barnes@dhs.arkansas.gov

**International Survey Associates
dba Pride Surveys**

Jay Gleaton
2140 Newmarket Parkway
Suite 116
Marietta, GA 30067
Telephone: (800) 279-6361
Fax: (770) 726-9327
Website: <http://www.pridesurveys.com>

Southwest Center for the Application of Prevention Technology

Website: <http://captus.samhsa.gov/southwest>

Southwest Prevention Center/ The University of Oklahoma

Website: <http://swpc.ou.edu/>

**Substance Abuse and Mental Health
Services Administration (SAMHSA)**

Website: <http://www.samhsa.gov>

Electronic copies of reports can be found at
http://www.state.ar.us/dhs/dmhs/adap_survey.htm.
Some reports require passwords.